



# CONTENTS

## **1. Horticultural Sheeting**

Pages 04 - 09

## **2. Tapes & Bagging**

Pages 12 - 14

## **3. Odour Neutralisation**

Pages 16 - 21

## **4. Nutrients & Additives**

Pages 22 - 69

## **5. Plant Propagation**

Pages 70 - 73

## **6. Air & CO<sub>2</sub> Enrichment**

Pages 74 - 77

## **7. Horticultural Lighting**

Pages 78 - 85

## **8. Plant Health**

Pages 86 - 89

## **8. Ventilation & Air Circulation**

Pages 90 - 93

## **9. Growing Accessories**

Pages 94 - 103

## **10. Retail & Packaging**

Pages 104 - 109

## **11. Additional Information**

Pages 110 - 111

Can't find what you're looking for? Get in touch and we will assist you any way we can!





For two decades, Easy Grow has been a premier wholesale leader in the Hydroponics and Horticultural industry, consistently providing top-tier products and expertise.

Our mission is simple: to offer easy access to high-quality products, tools, and resources. We've built enduring partnerships with renowned brands like Athena Nutrients, Green Planet Nutrients, Plug Life, and ONA Odour Neutraliser, ensuring excellence for our customers. As we continue to elevate the horticultural landscape, our commitment to quality and strong client relationships remains unwavering, making Easy Grow the go-to destination for all horticultural and hydroponic needs.

[www.easy-grow.co.uk](http://www.easy-grow.co.uk)  
[sales@easy-grow.co.uk](mailto:sales@easy-grow.co.uk)  
01472 346 900  
0800 612 9099

### Social Media

Instagram - @easygrowuk  
Facebook - EasyGrow  
X - EasyGrowUK



## Brands We Work With

Brands that have been tried, tested and trusted around the world by thousands.



Pages 34 - 43



Pages 24 - 25



Pages 16 - 21



Pages 04 - 09



Pages 70 - 73



Pages 79 - 81



Pages 66 - 67



Pages 75 - 77



Pages 46 - 49



Page 98 - 99



Pages 58 - 63



Pages 95 - 97





# Horticultural Sheeting

Easy Grow's horticultural sheeting offers durability, UV protection, and weather resistance, ensuring optimal plant growth. Ideal for various gardening applications, our high-quality sheeting solutions meet the needs of both amateur and professional gardeners.







HORTICULTURAL SHEETING

## Diamond Lightite® Pro



 200mu

 1.2mtr

The Lightite Pro range is the strongest sheeting available in the industry, designed for the professional grower, at 200mu thick it is our most thermally reflective sheeting.


It has a raised diamond diffused pattern to spread light more evenly over the canopy of the plant.


Available Sizes:  
100mtr / 30mtr / 10mtr / 5mtr

HORTICULTURAL SHEETING

## Silver Lightite® Pro



 200mu

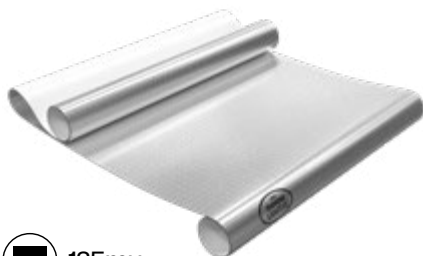
 1.2mtr


Part of the Lightite Pro range. Lightite silver/black grow sheets offer optimum light return and are 100% light tight. PET coated to protect against corrosion and wear.


Available Sizes:  
100mtr / 30mtr / 10mtr / 5mtr

HORTICULTURAL SHEETING

## Diamond Lightite®



 125mu

 1.2mtr

The flagship of the Diamond Lightite range, it has a raised diamond diffused pattern to spread light more evenly over the canopy of the plant.


First created in 2005 and is still used by thousands across the globe.

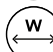
Available Sizes:  
100mtr / 30mtr / 10mtr / 5mtr

HORTICULTURAL SHEETING

## Silver/White Lightite®



 125mu

 1.2mtr

Part of the Lightite range. Lightite silver/black grow sheets offer optimum light return and are 100% light tight. PET coated to protect against corrosion and wear.

Available Sizes:  
100mtr / 30mtr / 10mtr / 5mtr



Lightite offers high-performance reflective sheeting designed to maximise light efficiency within indoor grow environments. Engineered for durability and tear-resistance, Lightite products help reflect and diffuse light evenly, ensuring your plants receive consistent coverage from all angles.

SCAN ME



HORTICULTURAL SHEETING  
**2m White Lightite®**



100% White Lightite® triple layered grow sheet with a centre fold. White both sides of the sheet but light tight to allow separate light cycles to perform within the same area.

White lightite provides better all round plant growth with increased yields.

Available Sizes:  
 100mtr / 30mtr / 10mtr / 5mtr

HORTICULTURAL SHEETING  
**3m White Lightite®**



100% White Lightite® triple layered grow sheet with a centre fold. White both sides of the sheet but light tight to allow separate light cycles to perform within the same area.

White lightite provides better all round plant growth with increased yields.

Available Sizes:  
 100mtr / 30mtr / 10mtr / 5mtr



Provide exceptional reflectivity while also helping to control heat within indoor grow spaces. With a bright white surface designed to diffuse light evenly, White Lightite effectively minimises hotspots and promotes uniform plant growth.

SCAN ME



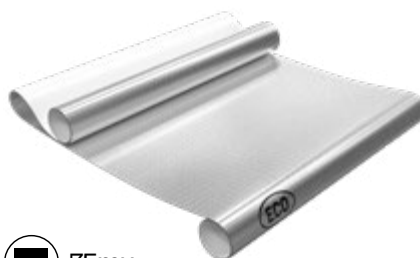
**ECO**

Easy Grow's ECO Sheeting range offers a cost-effective yet dependable solution for growers seeking to enhance light reflection and distribution. Made with durable, lightweight materials, ECO sheeting is designed for easy installation and maintenance.

SCAN ME



HORTICULTURAL SHEETING  
**Diamond ECO**

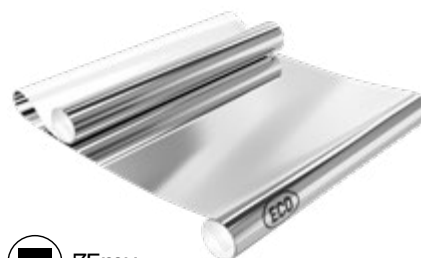


Diamond Eco Diffusion – with diffused pattern to spread light more evenly. Produced to help eliminate grow room hot spots. Membrane memory to dramatically reduce creasing effects & PET coated to protect against corrosion and wear.

Part of the ECO Sheeting range.

Available Sizes:  
 100mtr / 30mtr / 10mtr / 5mtr

HORTICULTURAL SHEETING  
**Silver ECO**



A silver white economy grow sheet to allow increased light reflection whilst supplying a safe and secure environment for growing. PET coated to protect against corrosion and wear.

Part of the ECO Sheeting range.

Available Sizes:  
 100mtr / 30mtr / 10mtr / 5mtr





HORTICULTURAL SHEETING

## HD Diamond Foil



120mu

W 1.2mtr

Ultra silver for maximum reflection, diamond diffused pattern to spread light more evenly and heavy duty to reduce the chances of ripping and creasing occurring.

Available Sizes:  
100mtr / 30mtr / 10mtr / 5mtr

HORTICULTURAL SHEETING

## Heavy Duty Foil



120mu

W 1.2mtr

Heavy Duty Silver foil sheeting from Easy Grow for maximum light reflection.

Available Sizes:  
100mtr / 30mtr / 10mtr / 5mtr

HORTICULTURAL SHEETING

## Ultra Silver Foil



50mu

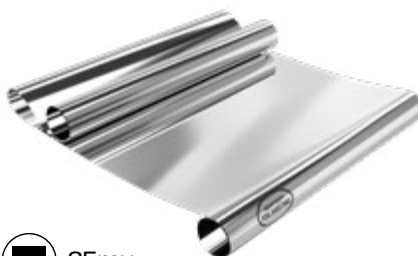
W 1.4mtr

Ultra Silver Foil Grow Sheet – is the ultimate reflective silver grow sheet, the perfect reflection on a dual layered silver roll. Stimulates vigorous growth.

Available Sizes:  
100mtr / 30mtr / 10mtr / 5mtr

HORTICULTURAL SHEETING

## Silver Foil



35mu

W 1.4mtr

Silver foil sheeting from Easy Grow for maximum light reflection, Provides 90-95% light reflectancy Silver both sides.

Available Sizes:  
100mtr / 30mtr / 10mtr / 5mtr

### FOIL SHEETING

Easy Grow's foil sheeting products offer a robust, reflective solution that's perfect for growers looking to maximise every lumen of light in their grow space. Crafted with a durable foil surface, these sheets efficiently bounce and diffuse light, minimising hotspots while boosting overall coverage.

SCAN ME





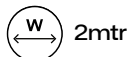
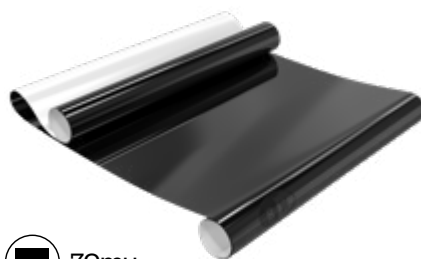
Easy Grow's black white sheeting products offer an efficient, dual-purpose solution for managing both light and temperature in indoor grow spaces. The white side helps reflect and diffuse light, encouraging more even coverage for your plants, while the black side effectively blocks out unwanted external light.

SCAN ME



#### HORTICULTURAL SHEETING

### Black & White 70mu

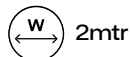
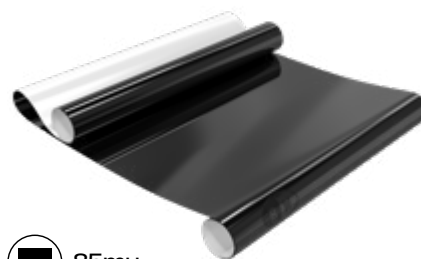


Lightweight and flexible, this 70mu sheeting gives you essential light control. The white side reflects light to boost brightness, while the black side blocks unwanted light. Ideal for short-term or budget grow setups.

Available Sizes:  
100mtr / 30mtr / 10mtr / 5mtr

#### HORTICULTURAL SHEETING

### Black & White 85mu

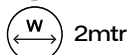
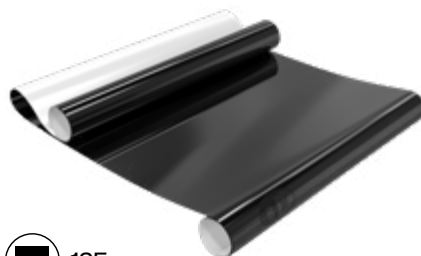


This 85mu sheeting strikes the perfect balance between strength and flexibility. Use the white side to reflect light and the black side to block it. Great for everyday use in both hobby and commercial spaces.

Available Sizes:  
100mtr / 30mtr / 10mtr / 5mtr

#### HORTICULTURAL SHEETING

### Black & White 125mu

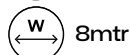
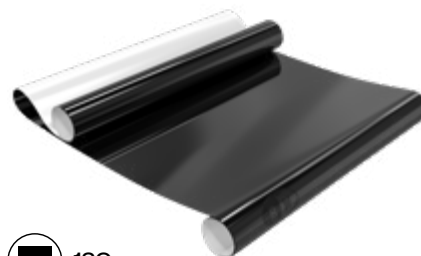


Built for durability, this heavy-duty 125mu sheeting offers long-lasting performance. The white side boosts light efficiency, and the black side shuts out stray light. Perfect for high-traffic or permanent grow rooms.

Available Sizes:  
100mtr / 30mtr / 10mtr / 5mtr

#### HORTICULTURAL SHEETING

### BW Commercial



Professional-grade 120mu sheeting for serious growers. The white side maximises reflectivity, while the black side prevents light leaks. Tough, reliable, and ideal for large-scale or commercial grow spaces.

Available Sizes:  
25mtr







Easy Grow's White Floor Secure is a robust, water-resistant covering specifically designed to protect floors and surrounding surfaces from water damage in growing environments and greenhouses.

SCAN ME

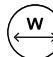


HORTICULTURAL SHEETING

## White Floor Secure®



 250mu

 4mtr

Created to save you from the worry and expense of water damage within any growing environment. This product is non-tearing and heavy duty to secure any floor and give ultimate peace of mind.

Super thick 250mu sheet for durability.

Available Sizes:  
25mtr / 10mtr \ 5mtr

# WHY LIGHTITE?

1.

## Maximise Light & Yield

Maximise the light that your plants receive by using Lightite products and their unique light diffusion technology. More light means better yields from your plants.

2.

## Reduce Energy Costs

With the ability to maximise the potential of the light, you will in turn reduce energy costs throughout your grow.

3.

## Durable & Consistent

Our sheeting is a durable product which provides consistently great results, ensuring your investment is worthwhile financially for both the short and long term.

4.

## Retains Light Lumens

Reduce the loss of precious light lumens, ensuring that your plants get more light. Our fantastic range of lightite sheeting is 100% lightproof and helps to optimise the growing conditions for your plants.

5.

## Made in the United Kingdom

All Lightite products are proudly designed and manufactured in Lincolnshire by Easy Grow's skilled team. Utilising cutting-edge materials and techniques, each product is crafted under rigorous quality standards to ensure superior reflectivity and durability.



# Helping CERN Model the Birth & Death of Stars.

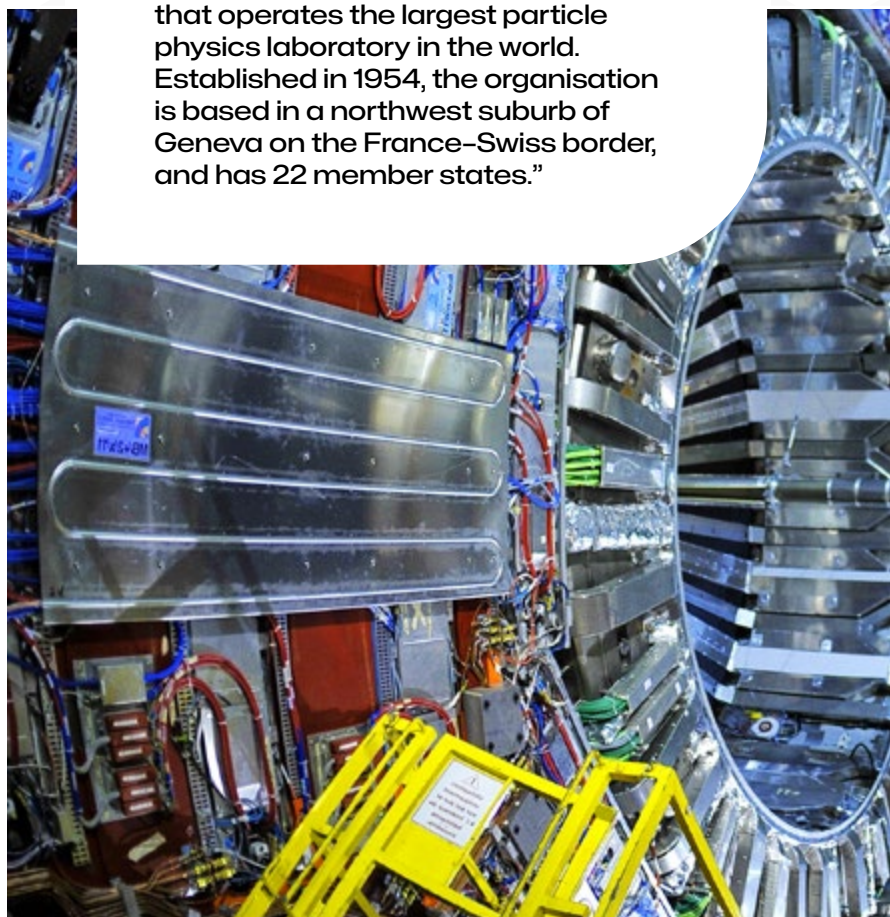
**Easy Grow Lightite® sheeting was used at a research facility in Switzerland to help physicists model the birth and death of stars!**

The high-quality Lightite® range of grow sheets are 100% lightproof and reflect both light and heat thermals to help growers achieve maximum yields in the growing environment. The best horticultural film in the industry is now being used by scientists at CERN to build detectors of rare isotopes, due to its unrivalled reflection and highly opaque properties.

In an interview with Miguel Madurgo Flores, the researcher conducting the experiments; he has told us why Lightite® Sheeting is the best solution for them and what they are trying to achieve.

**Hi Miguel - Thanks for talking with us, firstly can you explain what CERN is?**

“The European Organisation for Nuclear Research, known as CERN is a European research organisation that operates the largest particle physics laboratory in the world. Established in 1954, the organisation is based in a northwest suburb of Geneva on the France-Swiss border, and has 22 member states.”







**We have found Lightite is by far the best solution for this kind of research.**

#### **What are you currently researching?**

"Our research is conducted at the ISOLDE facility, at CERN. In this experiment we produce rare isotopes, that is, atoms that have the same chemical properties as ordinary matter but different mass. These isotopes are important to understand the evolution of stars, as the only places they occur naturally are the core of stars.

One way to investigate the properties of these isotopes is to measure the radiation they emit. In this case we are interested that they radiate neutrons, neutral particles. In order to detect neutrons we use plastic materials that emit light when hit by radiation, think of glow-in-the-dark watch faces."

#### **So why are you using Lightite® Sheeting and what benefits does it provide?**

"Since the efficiency of this type of material to detect radiation depends on how much light we produce and collect, we must wrap our detectors in completely opaque materials that at the same time reflect back as much light as possible. We have found Lightite® is by far the best solution for that.

The rolls you provided will be used to build a new set of detectors to increment our detection capabilities. Increased detection efficiency is crucial for us to be able to measure the more exotic and difficult-to-produce species. As so often happens in life, it turns out that the most interesting isotopes to measure are often the hardest to produce!"

#### **That's very interesting! So what will the detectors be used For?**

"What we do with this detector is neutron energy spectroscopy, we measure the energy of the neutron radiation to understand the properties of the emitter. These properties in turn allow to fine-tune the calculations other physicists use to model the birth and death of stars."

With great thanks to Miguel and all at CERN for providing us with the information and images of this incredible use of Lightite® sheeting in order to model the birth and death of stars.





# Horticultural Tapes & Bags

Easy Grow's horticultural tapes and bags provide durable, versatile solutions for plant support and protection. Designed for professional and amateur gardeners, these high-quality products ensure optimal growth and secure plant handling.





#### TAPES & BAGS

### **Metallised Heat Sealed Bags**



Metallised heat seal, light proof pouches provide the best way to keep your produce fresh. Available in 4 sizes – mini, small, medium and large and two colours – silver and black.

Available Sizes:  
150mm x 250mm  
300mm x 500mm  
500mm x 550mm  
500mm x 1000mm

#### TAPES & BAGS

### **Vacuum Storage Bags**



Vacuum Storage Bags allow you to remove all of the air from inside the bag, reducing the original volume by up to 80%. A fantastic storage solution.

Available Sizes:  
400mm x 600mm  
600mm x 800mm  
800mm x 1000mm  
800mm x 1200mm

### **Bag Storage Solutions.**

By removing excess oxygen, these bags help preserve freshness, flavour, and viability for longer periods, while also protecting against pests and moisture. This ensures that delicate horticultural products remain in prime condition until they're ready for use or sale.

#### TAPES & BAGS

### **Metallised Grip & Heat Seal Bags**



Metallised Grip & Heat Seal Bags provide the best way to keep your produce fresh. The grip and heat seal top ensures that the bag stays sealed shut.

Available Sizes:  
125mm x 150mm  
150mm x 250mm

Heat-sealed, grip-sealed and vacuum storage bags are a practical choice for the horticultural industry, enabling growers to store seeds, dried herbs, and other produce in an airtight environment.



## Horticultural Reflective Tapes.

Horticultural reflective tapes are specialised adhesives designed to improve light distribution in indoor or greenhouse grow spaces.

By reflecting light back towards the plants, they help reduce hotspots and boost overall luminosity, encouraging more uniform growth. Their durable, moisture-resistant construction ensures longevity, making them a practical choice for sealing, repairing, or reinforcing reflective surfaces and equipment.

TAPES & BAGS

### Foil Peeled Back Tape

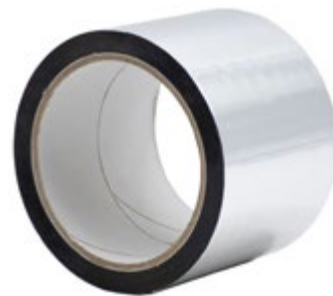


Incredibly easy to use thanks to the peel off backing and provides no loss of reflectance when taping Easy Grow sheeting together.

Available Sizes:  
48mm x 45mtr  
75mm x 45mtr

TAPES & BAGS

### Metallised Foil Tape



A quality foil tape for all ventilation and grow tent or grow room tasks, perfect for sticking together foils with no loss of reflectance.

Available Sizes:  
75mm x 50mtr

TAPES & BAGS

### Metallised X-Weave Tape



A reinforced cross weave design preventing tears or rips, and is highly adhesive to make sure your reflective sheeting stays in place.

Available Sizes:  
48mm x 45mtr  
72mm x 45mtr

TAPES & BAGS

### Silver Cloth Tape



A versatile and robust cloth tape with high adhesion for interior and exterior use.

Available Sizes:  
48mm x 50mtr



# Maximise your light reflection

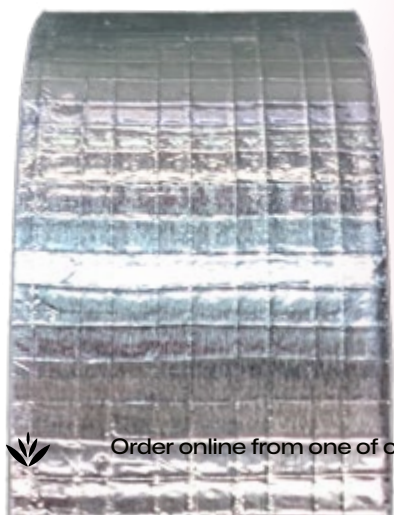


In any indoor growing environment, effective use of available light can make all the difference to plant health and yield. While large-scale reflectors and sheeting are crucial to boosting light efficiency, small gaps or tears can still allow valuable lumens to escape. This is where reflective horticultural tape comes into play—an often overlooked yet remarkably versatile tool for enhancing light distribution.

Reflective horticultural tape is designed to mirror and redirect any stray or lost light back towards your plants. By using it to seal seams between reflective sheets, repair minor tears, or reinforce corners and edges, you can maintain an unbroken reflective surface. In turn, this ensures more consistent coverage and helps minimise hotspots or shadowed areas where plants may receive insufficient light.

Beyond repairing and sealing, horticultural tape can also be used to reflect light in tight spaces, such as around pots or along plant supports. This targeted application allows growers to focus extra reflection where it's needed most—helping new shoots, lower leaves, or dense foliage receive adequate illumination. Additionally, its durable, moisture-resistant construction ensures that the tape remains firmly in place, even in humid conditions.

For a straightforward, cost-effective way to boost light usage and maintain an optimal growing environment, reflective horticultural tape is an indispensable addition to any indoor garden toolkit. By ensuring no light goes to waste, growers can encourage healthier plant growth and ultimately achieve bigger, better harvests.





# ONA Odour Neutraliser

ONA Odour Neutraliser effectively eliminates unwanted odours, providing a fresh environment. Ideal for gardeners, this high-quality product ensures spaces remain pleasant and odour-free. Available exclusively at Easy Grow.



**ona**<sup>®</sup>  
neutralises odours, naturally

# VERSATILE, POWERFUL & EFFECTIVE

Unwanted odours can occur when growing plants, and this requires the best odour control system available to prevent these odours escaping to unwanted places. We pride ourselves on distributing the very best odour control products on the market, completely neutralising unwanted odours rather than just masking them.

ONA is the original and the best in odour control. ONA has been serving the hydroponics industry since 1995. Do not be tempted by poor imitations, if you want the ultimate odour control solution, then ONA from OdorChem is the choice for you.

## NATURAL ODOUR NEUTRALISATION

ONA formulations have been scientifically engineered to be environmentally safe. Manufactured under strict quality controls to ensure a safe and non-toxic product.

## AVAILABLE IN 7 DIFFERENT SCENTS

ONA Odour Neutralising products come in 7 different scents depending on the product.

- Apple Crumble
- Tropics
- Pro
- Fruit Fusion
- Fresh Linen
- Lemongrass
- Polar Crystal



SCAN ME  
FOR MORE  
INFO



Order online from one of our online retailers • [www.easy-grow.co.uk/store-locator/](http://www.easy-grow.co.uk/store-locator/)



# INSTANTLY REMOVE ODOURS.

**ona**  
neutralises odours, naturally

## ONA ODOUR NEUTRALISATION ONA Gel



The ONA Gel is filled with a super absorbent polymers infused with the unique ONA formula. Simply unscrew the lid to start neutralising any odours in the environment.

Available Sizes & Scents:

400g:        
 732g:        
 3.8kg:        
 20kg:      

## ONA ODOUR NEUTRALISATION ONA Block



ONA Blocks are a fast & easy way to fight against odours at their source in small sized areas. Simply open and expose to the air or remove the block from its container.

Available Sizes & Scents:

170g:      

## ONA ODOUR NEUTRALISATION ONA Spray



ONA Spray is a non-aerosol pump spray bottle loaded with ONA odour neutraliser. One of our most convenient products made for every day life.

Available Sizes & Scents:

250ml:      

## ONA ODOUR NEUTRALISATION ONA Liquid








ONA Liquid is an odour neutraliser in liquid form. Add to a sprayer or dilute in water and use as a wash. The ONA Liquid can also be used to replenish the liquid in ONA Gel products.

Available Sizes & Scents:

922ml:        
 3.27Ltr:        
 20Ltr:      

## SCENT GUIDE

 Apple Crumble  
 Pro  
 Fresh Linen

 Tropics  
 Fruit Fusion  
 Lemongrass

 Polar Crystal





ONA ODOUR NEUTRALISATION

## ONA Breeze Fan



The ONA Breeze Fan has been designed to increase and speed up the distribution of ONA Gel. The Breeze fan is compatible with 732g jars and 3.8kg pails.

Please Note: 240 Volt Power Point Required

ONA ODOUR NEUTRALISATION

## ONA Cyclone Fan



The ONA Cyclone is a cost effective, high quality ONA Gel distribution system. This portable fan runs very quietly while effectively destroying odours where needed. Compatible with 20Kg ONA Gel pail

Please Note: 240 Volt Power Point Required

# MAXIMISE YOUR ODOUR CONTROL.

The ONA Breeze and Cyclone fans have been designed to enable you to get the most of our ONA Gel products. Maximising the space you can utilise ONAs odour neutralising formula quickly you removing those odours.



**ona**  
neutralises odours, naturally



ONA ODOUR NEUTRALISATION  
**ONA Misting Dome**



Create a relaxing atmosphere filled with the pleasant scents of ONA and remove any unwanted odours from the surrounding air. Use in conjunction with ONA Liquids.

Available Colours: White

ONA ODOUR NEUTRALISATION  
**AutoMist**



The AutoMist Odour Diffuser is a vehicle odour neutraliser that works to eliminate general odours and remove smoke smells from your car or van. Use in conjunction with ONA Liquids.

Available Colours: White & Black

ONA ODOUR NEUTRALISATION  
**ONA Block Dispenser**



ONA Block Dispenser is a convenient and easy-to-use device designed to hold ONA Odour Neutraliser blocks, ensuring continuous and effective odour control in small to medium-sized areas.

Available Colours: White & Black



ONA ODOUR NEUTRALISATION  
**ONA Air Filter**



The ONA Air Filter offers a robust and efficient solution for removing odours and improving air quality, specifically designed for integration with ducting systems.

Available Sizes: 4", 5", 6", 8", 10" & 12".

ONA ODOUR NEUTRALISATION  
**ONA Spray Card**



The ONA Spray Card is small, thin and fits easily into your pocket or bag, allowing you to have protection from odours on the move.

Available Sizes & Scents: 12ml: 🍏 🌊 🌿

**SCENT GUIDE**

🍏 Apple Crumble  
 🌊 Pro  
 🌿 Fresh Linen

🌴 Tropics  
 🌺 Fruit Fusion  
 🌿 Lemongrass

🌬️ Polar Crystal



# Science's Power, Nautre's Essence



ONA odour neutralising products consist of complex formulations representing a variety of chemical compounds offering different functionalities, both structural and chemical.

The technology behind ONA was initiated over 25 years ago. The scientist (who was eventually credited with the invention of ONA) became fascinated when he observed that when terpenes were diffused into the environment, emission's and odours were reduced. Inspired by this finding, further evidence showed that the odours were not just masked but permanently removed.

The result was a set of specialised formulations that neutralise a wide spectrum of organic and inorganic odour problems – effectively, efficiently and permanently. ONA odour neutralisation formulations have been scientifically engineered to be environmentally safe. Manufactured under strict quality controls, the components of ONA are generally recognised as common in the food industry and have a long history of safety.



## Mechanisms of action

There are three mechanisms of action that can occur, based on the chemical and physical natures of each terpene and active ingredient versus the organic and inorganic volatile compounds (odours).



Absorption occurs when an ONA molecule soaks up an odour molecule, which neutralises the odour as a result.



Electrostatic and molecular forces cause ONA molecules to attract and bond with odour molecules – this is adsorption.



When a chemical reaction occurs, the combined ONA & odour molecules react, changing to create a neutral compound, eliminating the odour.





# Nutrients & Additives

Easy Grow's nutrient and additive range includes premium solutions from top brands like Athena Nutrients, Green Planet, and Remo Nutrients. Our products enhance soil quality, boost yields, and cater to both professional and amateur gardeners.



# Our Nutrient Brands

We work together with some of the best nutrient brands across the globe to bring you the best of the best for your plants.



Pages 24 - 29



Pages 32 - 33



Pages 34 - 43



Pages 46 - 49



Pages 66 - 67



Page 58 - 63



Pages 50 - 55



Page 68



Pages 64 - 65





EASY GROW ARE OFFICIAL UK DISTRIBUTORS FOR ATHENA NUTRIENTS



# THE PERFECT RUN™

**BALANCED NUTRITION.  
COST EFFECTIVE.  
RESULTS DRIVEN.**





<sup>®</sup>  
**ATHENA**

## PRO & BLENDED RANGES AVAILABLE AT EASY GROW

Athena exists to support the modern grower, no matter the scale. Their core principle is to develop and validate superior products that improve quality, reduce costs and drive consistency.

Athena was born in the grow rooms of Los Angeles, California, where they are always in pursuit of the perfect run. As the weight of being a cultivator increases, they exist to make the complex simple.

Athena was developed and tested by the Athena cultivators in conjunction with Jungle Boys. Formulated by Chris Durand, industry leader in plant biology.

**ATHENA IS NOT A NUTRIENT LINE,  
IT IS A PROGRAM.**



### FIND OUT MORE

Scan here to find out more about the Athena Pro and Blended product ranges.







# TRUST THE PROGRAM



Ideal for hobby and home growers. Ready to use concentrates that work best for hand watering and simple irrigation setups. No dry fertiliser experience needed.

- ◆ Flexible & familiar.
- ◆ Customisable for different plants and environments.
- ◆ DWC Compatible.
- ◆ Easy, ready to use & consistent.

Designed for professional large-scale cultivators using advanced fertigation systems (Dosatron, Netaflex, Rhythm). Those with prior experience using salt lines.

- ◆ Fully soluble powders require pre-mixing as a concentrate before batch mixing or injection
- ◆ Simple, 2-parts per stage
- ◆ Super-clean formula with no particulates or residue
- ◆ Will not clog drippers/emitters
- ◆ Will not create biofilm
- ◆ Compatible with all fertigation systems
- ◆ Long shelf life and reduced storage space - resulting in reduced freight costs





ATHENA NUTRIENTS

## Grow A



ATHENA NUTRIENTS

## Grow B



Athena Grow A & B is a simple and clean formula designed for the vegetative stage of growth and for non-flowering plants. Our carefully formulated mineral ratios provide essential nutrients to create conditions for optimal plant development.

Available Sizes: 940ml, 3.78Ltr & 18.92Ltr

ATHENA NUTRIENTS

## Bloom A



ATHENA NUTRIENTS

## Bloom B



Athena BloomA & B is a simple and clean 2-part formula designed for the flowering stage of growth for flower- and fruit-producing plants.

Available Sizes: 940ml, 3.78Ltr & 18.92Ltr



ATHENA NUTRIENTS

## Balance

NPK: 0-0-2



Athena Balance is a simple formula of potassium silicate specifically concentrated to buffer irrigation water and stabilise to ideal pH.

Available Sizes: 940ml, 3.78Ltr & 18.92Ltr

ATHENA NUTRIENTS

## PK

NPK: 0-4-5



Athena PK is a balanced bloom boosting complement to Athena Nutrients' Bloom fertilisers. This clean liquid booster is designed to supplement during the mid- to late-flowering phase.

Available Sizes: 940ml, 3.78Ltr & 18.92Ltr

ATHENA NUTRIENTS

## CaMg

NPK: 2-0-0



Athena CaMg is designed to supplement either of Athena Nutrients' 2-part liquid formulas when Calcium, Magnesium, Iron or Nitrogen is required during heavy growth and development phases.

Available Sizes: 940ml, 3.78Ltr & 18.92Ltr

ATHENA NUTRIENTS

## Cleanse



Athena Cleanse is made from the ideal (and safe) root zone optimising agents – Hypochlorous acid.

Available Sizes: 940ml, 3.78Ltr & 18.92Ltr

ATHENA NUTRIENTS

## IPW



Elevate your plant game with Athena IPW, your ultimate ally in nurturing vibrant foliage during the Vegetative phase through week 3 of Flower.

Available Sizes: 940ml & 3.78Ltr







ATHENA NUTRIENTS

## Pro Grow

NPK: 2-8-20



The vegetative growth stage demands well-rounded nutrition to establish strong roots and lush foliage. Athena Pro Grow is a balanced soluble fertiliser blend formulated for commercial cultivators to streamline irrigation.

Available Sizes: 4.5kg & 11.36kg

ATHENA NUTRIENTS

## Pro Bloom

NPK: 0-12-24



Flowering plants require higher amounts of phosphorous (P) and potassium (K) to increase flower bulk and support high-metabolic activities.

Available Sizes: 4.5kg & 11.36kg

ATHENA NUTRIENTS

## Pro Core

NPK: 14-0-0



Athena Pro Core provides strong baseline nutrition across all stages of plant growth. Nitrogen to assemble chlorophyll and amino acids.

Available Sizes: 4.5kg & 11.36kg

ATHENA NUTRIENTS

## Pro Balance



Athena Pro Balance allows the grower to customise the strength of their pH adjustment to their unique situation.

Available Sizes: 4.5kg & 11.36kg



# The Importance of pH & EC Management

Maintaining correct pH and EC (electrical conductivity) is crucial for healthy hydroponic growth. Even premium nutrients from Athena, Green Planet, Remo Nutrients, or BioTabs won't perform if your solution is out of balance.

When pH drifts above or below the ideal 5.5–6.5 range, plants can't absorb key nutrients, leading to deficiencies or toxicity. Regular testing with a quality pH meter—along with gentle, incremental adjustments—helps ensure consistent levels.



”  
**Regular testing with a quality pH meter—along with gentle, incremental adjustments—helps ensure consistent levels.**



## **EC (Nutrient Strength) Basics**

EC measures how many nutrients are dissolved in your solution. A high EC risks nutrient burn, while a low EC can lead to weak, pale plants. Follow feeding charts for each growth stage, especially for younger seedlings or when plants are in heavy flowering or fruiting cycles. By dialling in the right EC, you'll prevent guesswork and keep plants thriving.

## **Essential Tools and Tips**

Invest in accurate pH and EC meters, and calibrate them regularly. Avoid sudden pH swings by adding pH Up or Down in small doses. Monitor water temperature (18–22°C is common) to keep your readings stable. Some nutrient lines include buffering agents to reduce the need for frequent adjustments.

## **Final Thoughts**

A balanced pH and EC regimen, paired with top-quality nutrients, sets the foundation for lush growth and abundant harvests. By giving these measurements regular attention, you'll help your hydroponic system reach its full potential—and enjoy healthier, more productive plants in every cycle.





# THE ORGANIC WAY TO GROW



BioTabs produces organic fertilisers & organic plant food, using the force of organic soil improving organisms.

BioTabs stimulates soil organisms by converting organic material into ideal organic plant food. In this way, plants develop strong root systems and are disease-resistant as they grow towards fruition.

The products BioTabs offers are all natural fertilisers for plants and fully organic soil improvers, all 100% certified organic. BioTabs guarantees a fair, full and very tasty harvest.



FIND OUT MORE



**100%**  
ORGANIC  
CERTIFIED

BIOTABS

**BioTabs**

NPK: 15-7-8



BioTabs are slow-release organic fertiliser tablets for annual plants. BioTabs contain a formula of slow-acting NPK, natural humic acids and beneficial soil bacteria.

Available Sizes: 10 Pcs & 100 Pcs

BIOTABS

**Bactrex**



BACTREX BioTabs is a dry, water-soluble powder with a large number of beneficial soil bacteria and root microbes, Trichoderma fungi and actinomycetes. These are especially selected for their desirable effect on soil structure and fertility.

Available Sizes: 250g



BIOTABS

## Guerrilla Juice

NPK:5-1-5



Organic Guerrilla Juice 5-1-5 is a liquid organic growth and flowering accelerator that stimulates a healthy soil and optimal growing conditions.

Available Sizes: 500ml

BIOTABS

## Mycotrex



Mycorrhiza are beneficial soil fungi that enter into symbiosis with the plants. They increase the effective reach of the roots, but are actually functioning like roots.

Available Sizes: 100g

BIOTABS

## Orgatrex

NPK: 5-1-5



BioTabs Orgatrex is an organic growth and flowering booster. Perfect for use with soil or coco and is 100% certified organic. Suitable for indoor or outdoor use.

Available Sizes: 1Ltr & 5Ltr

BIOTABS

## Guerrilla Box

NPK: Juice: 5-1-5 / Tabs: 15-7-8



Slow release organic fertiliser tablets, solution AND beneficial bacteria. Contains 20 Guerrilla Tabs & 500ml of Guerrilla Juice.

Available in one size.

BIOTABS

## Starter Pack



The BioTabs Starter Pack contains nutrients and soil improvers that you are going to need for a thriving, successful and 100% organic growth. Includes: BioTabs, Startrex, Orgatrex, Mycotrex & Bactrex (5-10 plants).

Available in one size.

BIOTABS

## BioTabs Seed Plugs



Give your plants the best possible initiation with the BioTabs Seedplugs tray consisting of 12 cells and a nutritious bio Startermix solution!

Available Sizes: 12 Cell tray



# QUALITY FOCUSED. RESULTS BASED.



CLEAN - CONSCIOUS - CANADIAN



AVAILABLE EXCLUSIVELY AT EASY GROW







Green Planet Nutrients include many types of fertilisers in the line up, including dry and liquid fertilisers. These fertilisers include base nutrients, additive nutrients and maintenance products. Whether it's to provide a base level of nutrition, increase resin and aroma in flowers, and maintain your growing environment, each fertiliser is designed to optimise performance.

Green Planet Nutrients has a product for you, no matter your style. They're passionate about formulating the best, cleanest, and most highly bio-available nutrients on the market. High quality nutes = happy and healthy plants.

Whatever style of growing you decide, Green Planet can help you achieve the best results possible. Their icon system aims to aid you in choosing the right product to suit your individual growing needs. If you need to figure out which feed program is right for you, take a look at Green Planets predetermined feed programs.



#### **FIND OUT MORE**

Scan here to find out more about the Green Planet product range.



GREEN PLANET NUTRIENTS

## Bud Booster

NPK: 1-50-30



Bud Boosters high levels of phosphorus helps to promote blooming and assists in plants metabolism during the middle of the flowering stage.

Available Sizes: 100g, 500g, 1kg, 2.5kg, 5kg & 10kg

GREEN PLANET NUTRIENTS

## Dense Bud Compactor

NPK: 0-0-62



Dense provides the potassium which is needed in relatively large amounts to support the various plant functions critical for huge yields.

Available Sizes: 100g, 500g, 1kg, 2.5kg, 5kg & 10kg

GREEN PLANET NUTRIENTS

## Karbo Boost



Karbo Boost is a powdered supplement that delivers an added source of carbohydrates for microbial life during the flowering stage.

Available Sizes: 60g, 600g, 1kg, 2.3kg & 11.34kg

GREEN PLANET NUTRIENTS

## GP3 Grow

NPK: 2-1-6



GP3 Grow is the component of the GP3 nutrient system that provides your plants with the optimal nutrients they require in the vegetative stage of growth.

Available Sizes: 1Ltr, 4Ltr, 10Ltr & 23Ltr

GREEN PLANET NUTRIENTS

## GP3 Bloom

NPK: 0-5-4



GP3 Bloom is the component of the GP3 nutrient system that provides your plants with the right nutrients they need in the flowering stage of growth.

Available Sizes: 1Ltr, 4Ltr, 10Ltr & 23Ltr

GREEN PLANET NUTRIENTS

## GP3 Micro

NPK: 5-0-1



GP3 Micro is the component of the GP3 nutrient system that provides your plants with the essential and supplemental nutrients they need in the grow and bloom stages of growth.

Available Sizes: 1Ltr, 4Ltr, 10Ltr & 23Ltr





# BIGGER

# DENSER



# BUDS





## MediOne 1-Part Kit



Green Planet's all-natural 1 part base nutrient, Medi One, is now available in a convenient and ready to use nutrient kit. This kit includes everything you need to grow from early veg until the last weeks of flower with easy-to-mix 500ml bottles.

This brand new kit also comes with some of Green Planet's top additives to help your plant reach its full potential.

This Kit Includes (500ml):

Medi One	Liquid Weight
Ocean Magic	Rezin
Massive Bloom	

## Dual Fuel 2-Part Kit



Green Planet's simple and effective 2-part nutrient system Dual Fuel is now available in a convenient and ready to use nutrient kit. This brand new kit also comes with some of Green Planet's top additives to help your plants reach their full potential.

This kit includes everything you need to grow from early veg until the last weeks of flower.

This Kit Includes (500ml):

Dual Fuel 1&2	Liquid Weight
Vitathrive	Rezin
Massive Bloom	

## GP3 3-Part Kit



Green Planet's unrivalled 3-part nutrient system GP3 is now available in a convenient and ready to use nutrient kit.

This brand new kit also comes with some of Green Planet's top additives to help your plants reach their full potential. This kit includes everything you need to grow from early veg until the last weeks of flower.

This Kit Includes (500ml):

GP3 Grow, Bloom & Micro	Liquid Weight
Vitathrive	Rezin
	Massive Bloom

## GP Hydro Fuel 4-Part Kit



Green Planet's easy to use 4-part base nutrient Hydro Fuel is now available in a convenient and ready to use nutrient kit. This brand new kit also comes with some of Green Planet's top additives to help your plants reach their full potential.

This kit includes everything you need to grow from early veg until the last weeks of flower.

This Kit Includes (500ml):

Hydro Fuel Grow A+B	Liquid Weight
Hydro Fuel Bloom A+B	Rezin
Vitathrive	Massive Bloom



# GreenPlanet

# ICON GUIDE

Green Planet have a huge range of products in their line up, including base nutrients, additives, maintenance products, products for use in different growing stages and different garden environments.

Because of this, Green Planet have developed a simple icon guide to make it easier for growers to figure out which products they should use and how to use them.

## FERTILISER TYPE



### LIQUID FERTILISER

This icon symbolises liquid fertiliser. If you're all about indoor growing and hydroponics, liquid fertilisers are probably your go-to type of plant nutrient.



### DRY FERTILISER

This icon symbolises dry fertiliser. Dry plant fertilisers consist of small beads or pellets that release nutrients into the soil. They also allow you to feed less often.

## NUTRIENT TYPE



### BASE NUTRIENTS

This icon symbolises base nutrient. Base nutrients are the most essential type of nutrient. Plants have three basic elements they need to survive: Nitrogen (N), Phosphorus (P) and Potassium (K).



### MAINTENANCE PRODUCT

This icon symbolises a maintenance product. Maintenance products maintain a certain aspect of your garden, and help you to help your plants.



### ADDITIVE NUTRIENT

This icon symbolises an additive nutrient. Additive nutrients are performance boosters. They can enhance aroma, resin production, and even the size of blooms, when included in your feed program.

## FERTILISER TYPE



### VEGETATIVE STAGE

This icon indicates this product is formulated for use during the vegetative stage of growth.



### FLOWERING STAGE

This icon indicates this product is formulated for the flowering stage of growth, including fruiting.

## WHERE TO USE



### HYDRO

Products with this icon can be used in hydroponic systems. Including drip systems, nutrient film technique, water culture/deep water culture, aeroponics, and wick systems.



### COCO

Products with this icon are great for use in coco mediums. Coco mediums are any type of medium that is derived from coconut fibres.



### SOILLESS

Products with this icon can be used in soilless mediums. Including perlite, peat moss, sand, gravel, pebbles, rock wool, vermiculite, rice hulls, sawdust, straw, etc.



### CONTINUOUS LIQUID FEED

Products with this icon are suitable for continuous liquid feed (CLF) programs. CLF programs provide plants a constant feed of nutrients.



GREEN PLANET NUTRIENTS

## Dual Fuel 1

NPK: 5-0-1



Green Planet Nutrient's first true stand-alone, 2-part nutrient system. Dual Fuel is the simplest and most effective 2-part nutrient system on the market.

Available Sizes: 1Ltr, 4Ltr, 10Ltr & 23Ltr

GREEN PLANET NUTRIENTS

## Dual Fuel 2

NPK: 0-3-6



Green Planet Nutrient's first true stand-alone, 2-part nutrient system. Dual Fuel is the simplest and most effective 2-part nutrient system on the market.

Available Sizes: 1Ltr, 4Ltr, 10Ltr & 23Ltr

GREEN PLANET NUTRIENTS

## GPF Uptake

NPK: 0-1-1



GPF Uptake is a water-soluble formula of low molecular weight humic acid that benefits the plant during the entire growth cycle.

Available Sizes: 1Ltr, 4Ltr & 10Ltr

GREEN PLANET NUTRIENTS

## Hydro Fuel Grow A+B



Hydro Fuel Grow is a 4-part nutrient system containing all primary, secondary and essential micro nutrients necessary to encourage robust vegetative growth.

Available Sizes: 1Ltr, 4Ltr, 10Ltr & 23Ltr

GREEN PLANET NUTRIENTS

## Hydro Fuel Bloom A+B



Hydro Fuel Bloom is a 4-part nutrient system containing all primary, secondary and essential micro nutrients necessary to encourage robust vegetative growth.

Available Sizes: 1Ltr, 4Ltr, 10Ltr & 23Ltr

GREEN PLANET NUTRIENTS

## GPH Uptake

NPK: 0-0-1



GPH Uptake is a soluble formula of humic acid that aids the plant with nutrient uptake throughout its entire life cycle.

Available Sizes: 1Ltr, 4Ltr & 10Ltr





GREEN PLANET NUTRIENTS

## Liquid Weight



Liquid Weight is a supplement blend of simple and complex carbohydrates that support the plant and beneficial microbial life in the root zone. This leads to an increase in the absorption of essential nutrients that help develop impressive aromatic flowers & fruits.

Available Sizes: 1Ltr, 4Ltr, 10Ltr & 23Ltr

GREEN PLANET NUTRIENTS

## Massive Bloom

NPK: 1-2-3



Massive is a comprehensive bloom additive that contains a full array of the micro elements plants require to produce large, healthy flowers. Increases flower size & taste, and leads to healthier, larger and more colourful crops.

Available Sizes: 1Ltr, 4Ltr, 10Ltr & 23Ltr

GREEN PLANET NUTRIENTS

## Ocean Magic

NPK: 0-0-5



Ocean Magic is a kelp additive that is used in the vegetative stage to benefit the growth and vigour of your plants. The ingredients found in Ocean Magic support a number of functional properties, as well as increasing the overall vitality of your plants.

Available Sizes: 1Ltr & 4Ltr

GREEN PLANET NUTRIENTS

## PK Spike

NPK: 0-14-15



PK Spike is derived from several highly soluble sources of phosphorus (P) and potassium (K) to deliver high amounts of PK to flowering plants. This product is designed to encourage budding, help facilitate bulking, and ripening of flowering plants.

Available Sizes: 500ml, 1Ltr & 4Ltr

GREEN PLANET NUTRIENTS

## Plant Guard

NPK: 0-0-3



Plant Guard is our potassium silicate supplement used in the vegetative and flowering stage of growth. Silicates increases the rigidity of your plants cell walls to support a heavier harvest and increase resistance to environmental stress.

Available Sizes: 1Ltr, 4Ltr, 10Ltr & 23Ltr

GREEN PLANET NUTRIENTS

## Pro Cal

NPK: 2-0-0



Pro Cal is an excellent supplemental source of calcium, magnesium and iron. Plants engaged in rapid growth can often come up short on these essential elements so supplementation is a great idea.

Available Sizes: 1Ltr, 4Ltr, 10Ltr & 23Ltr





GREEN PLANET NUTRIENTS

## Root Builder



Root Builder is formulated with extremely active beneficial organisms that deliver an abundance of benefits to your plant's root zone at all stages of growth.

Available Sizes: 1Ltr, 4Ltr, 10Ltr & 23Ltr

GREEN PLANET NUTRIENTS

## Medi-One

NPK: 4-3-3



Medi One is Green Planet's one part base nutrient system formulated with readily available macro and microelements for organic use. Expect vigorous vegetative growth and vibrant floral production with only one bottle.

Available Sizes: 1Ltr, 4Ltr, 10Ltr & 23Ltr

GREEN PLANET NUTRIENTS

## Rezin



Rezin is our aroma and flavour enhancer that was developed to greatly increase the essential oil and resin production of flowering plants. The result is high quality flowers at time of harvest.

Available Sizes: 1Ltr, 4Ltr, 10Ltr & 23Ltr

GREEN PLANET NUTRIENTS

## Vitathrive

NPK: 0-0-1



Vitathrive propagation solution is our comprehensive blend of vitamins and minerals formulated for the vegetative stage of plant growth. It is designed to reinforce plant health and support essential plant functions.

Available Sizes: 1Ltr, 4Ltr, 10Ltr & 23Ltr

GREEN PLANET NUTRIENTS

## Zyme Caps



Zyme is a comprehensive blend of enzymes & biocatalysts in a dry encapsulated formulation that can be applied at any stage of plant growth.

Available Sizes: 25 caps, 100 caps & 250 caps



# GreenPlanet FAQ



## Q: Are all Green Planet Nutrients organic or mineral based?

A: Green Planet products are mineral-based and organic like Medi One or Ocean Magic. Medi One is OMRI registered.

## Q: What is the shelf life of Green Planet Products?

A: 2-3 years when stored in a cool, dark space. Shelf life will vary between products.

## Q: What should my PH be?

A: Keep your pH levels between 5.8-6.5 for optimal nutrient uptake.

## Q: What is the difference between your feed programs?

A: Medi One is a natural based 1 part, Dual Fuel is a synthetic 2 part, GP3 is a synthetic 3 part, and Hydro Fuel is a synthetic 4 part. This allows for more or less control over which nutrients you feed to your plant. The 1-2 part lines are uncomplicated and are easy to use, while the 3-4 allows for more tinkering, suitable for serious growers or hobbyists.

## Q: How do I use Green Planet Nutrients?

A: Measure out and pour the concentrated nutrients into the water reservoir. Do not mix concentrated nutrients together. Add them to the water one at a time and rinse the reservoir between feeding.

## Q: What grow medium should I use with Green Planet Nutrients?

A: The majority of our nutrients will work in any grow medium. Refer to the handy icons on each of our bottles to see which mediums the nutrient is recommended for.

## Q: How long will Green Planet Nutrients last in a reservoir?

A: It will depend on the conditions of your reservoir and which nutrients you are using. We recommend changing your nutrient solution every 1-2 weeks.

## Q: Which Green Planet products can I use for a flush?

A: Using Rezin during flush ensures a clean, aromatic, and flavourful crop.

## Q: Do Green Planet products work outdoors as well as indoors?

A: Yes. All nutrient lines are interchangeable. However, some are more suited to outdoors like our Backcountry Blend line. Remember to refer to the icons to see which medium it suits best!

## Q: When do I start feeding my plants, and how often?

A: When the first set of true leaves emerge (the second set, post-germination). Refer to the feed charts for help with feeding schedules.

## Q: What do the icons on the Green Planet products mean?

A: Each icon indicates whether the nutrient is a base or an additive, which stage of growth to use it at, and which medium to use it with.

## Q: What do the 3 numbers on Green Planet products mean?

A: The 3 numbers are N-P-K values. N-P-K stands for nitrogen, phosphorus and potassium. These are the macronutrients that are key for healthy plant growth.

## Q: Can I use Green Planet Nutrients as a Foliar Spray?

A: Some are suitable for foliar feeding, such as Ocean Magic or Medi One. Look for low NPK values or more natural-based nutrients so that you don't burn the foliage.





# Why use a Full Plant Nutrient Programme.



**When it comes to nurturing strong, vibrant plants, going beyond basic fertiliser can make a world of difference.**

A full plant nutrient programme provides tailored support at every stage of growth—helping your garden reach its maximum potential. Here's why you should consider using a complete feeding regimen, plus a few trusted brands that Easy Grow offers:

## 1.

### **Tailored Nutrition for Each Growth Stage**

Traditional methods typically deliver a single blend of nutrients, often without considering a plant's varying needs for rooting, vegetative, and flowering phases. A brand like Athena Nutrients takes the guesswork out of feeding schedules by offering carefully balanced formulas for every stage. This precision ensures your plants get the exact macro and micronutrients they need at just the right time.

## 2.

### **Improved Yield and Health**

A comprehensive programme doesn't just keep plants alive—it encourages them to thrive. Green Planet products, for instance, are formulated to boost your garden's overall health, promoting stronger stems, thicker foliage, and an abundance of blooms or fruit. By following their clear nutrient schedule, you can reduce the risk of under- or overfeeding, leading to more consistent, high-quality results.





**A full plant nutrient programme provides tailored support at every stage of growth—helping your garden reach its maximum potential.**

## 3.

### **Improved Yield and Health**

Many full nutrient lines, like Remo Nutrients, provide detailed feeding charts that outline exactly how much and how often to apply each part of the programme. This not only saves time but also helps you avoid the common pitfalls of guesswork-based gardening. The easier the plan is to follow, the less likely you are to encounter problems—making your grow run smoother from start to finish.

## 4.

### **Long-Term Soil Health and Microbial Balance**

Some nutrient lines focus heavily on building a healthy soil ecosystem over the long haul. BioTabs, for example, are known for their organic, slow-release tablets that are packed with beneficial microbes. This holistic approach doesn't just feed your plants right now; it enriches the soil for future grows, helping you maintain a vibrant, living growing medium season after season.

## 5.

### **Professional-Grade Results at Home**

Whether you're a seasoned grower or just starting out, using a reputable, complete nutrient line can help you unlock the same kind of robust yields and top-notch quality that professional cultivators enjoy. Brands like Athena Nutrients, Green Planet, Remo Nutrients, and BioTabs all offer specialised programmes that align closely with commercial standards—so you can achieve exceptional results right at home.

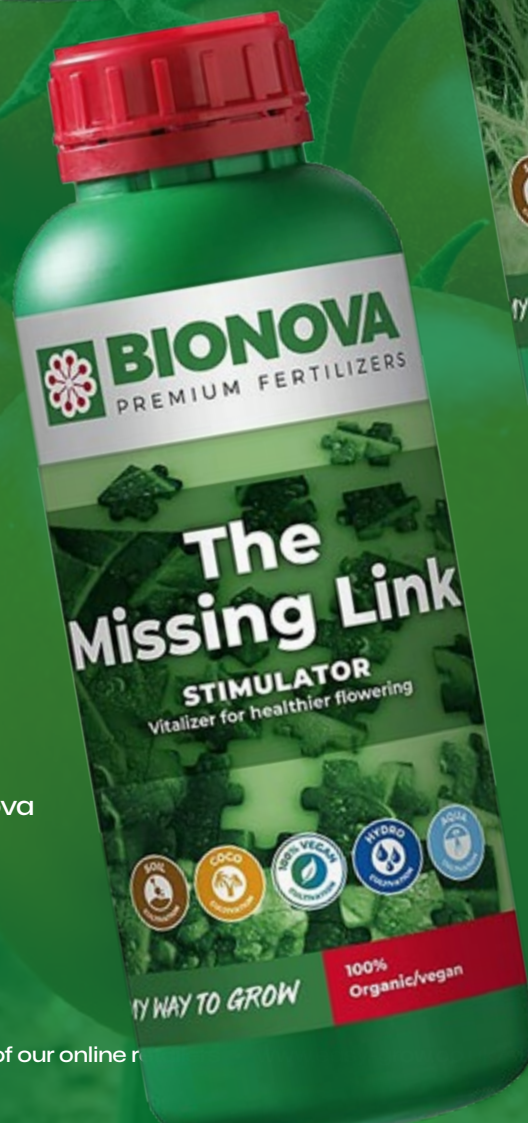
## **In Conclusion**

A full plant nutrient programme—be it from Athena, Green Planet, Remo, or BioTabs—streamlines your feeding routine and provides the precise care needed for each stage of plant development. By investing in a tailored system, you're setting the foundation for healthier plants, bigger harvests, and a more satisfying gardening experience overall.





# SIMPLE. RELIABLE. INNOVATIVE.



BioNova has been known as a manufacturer of premium fertilisers for all growing and flowering plants since the 1990's. Years of studies and research, combined with practical experience and the deep insights that are gained as a result, have led to unique high-end products. Quality, purity, environmental-friendliness, ease-of-use, high yields and superior end-results are the distinguishing characteristics of these products.



## FIND OUT MORE

Scan here to find out more about the BioNova product range.





BIONOVA PREMIUM FERTILISERS

## Coco Brick



Bionova Cocobrick is an excellent natural 100% coco substrate. This brick consists of six smaller bricks which result in 10 litres of ready-to-use coconut substrate after adding 3.5-4 litres of water to it.

Available Sizes: Pack of 6

BIONOVA PREMIUM FERTILISERS

## Aero Supermix

NPK: 6-4-6



Aero SuperMix is a one component bio-mineral fertiliser especially developed for systems that do not make use of any substrates.

Available Sizes: 1Ltr & 5Ltr

BIONOVA PREMIUM FERTILISERS

## BN-Zym



BN-Zym is a natural bio-catalyst (process accelerator), medium builder and medium improver based on specific enzymes.

Available Sizes: 250ml, 1Ltr & 5Ltr

BIONOVA PREMIUM FERTILISERS

## Coco-Forte A&B

NPK: A: 8-0-0 / B: 0-6-12



Coco Forte A/B fertiliser is the most simple solution for cultivating on cocofiber slabs. One of the reasons which makes its application so easy is the combination of nutrients for growing and flowering within one product; two bottles is all you need for the entire growth.

Available Sizes: 1Ltr & 5Ltr

BIONOVA PREMIUM FERTILISERS

## Hydro Supermix

NPK: 7-4-5



Hydro Supermix is a one component bio-mineral fertiliser especially developed for systems with artificial substrates such as rock wool.

Available Sizes: 1Ltr & 5Ltr



## TRANSPARENCY, DATA & SCIENCE.

At Bionova Nutrients, we are driven by transparency, data, and science. Since the founding in 1993, research has been a fundamental of our commitment to innovation and excellence in plant nutrition. We believe that true performance in cultivation begins with knowledge, which is why we continuously push the boundaries of research to develop groundbreaking solutions that optimise growth, yield and sustainability.



BIONOVA PREMIUM FERTILISERS

## PK 13-14

NPK: 0-13-14



PK 13-14 is the perfect balanced combination of Phosphor and Potassium. Phosphor activates blooming inside any treated plant and Potassium prompts flowering and creates an exuberant flowering.

Available Sizes: 1Ltr & 5Ltr

BIONOVA PREMIUM FERTILISERS

## Roots

NPK: 1-0-0



Bionova Roots activates a better and more rapid root development, more root hairs, a higher food absorption, more resistance against stress, more effective use of nutrients and a higher yield on all tested crops.

Available Sizes: 250ml & 1Ltr

BIONOVA PREMIUM FERTILISERS

## Silution



Bionova Silution is a plant strengthening liquid stimulator based on stabilised silicic acid and fulvic acid. Silution stimulates nutrient uptake, defense against viruses and infections and results in more dry weight.

Available Sizes: 250ml

BIONOVA PREMIUM FERTILISERS

## Soil Supermix

NPK: 7-3-6



Soil SuperMix is a one component mineral-organic fertiliser based on Hydro SuperMix and especially adapted to systems with soil. Nutrients for growing and flowering are combined within one product which makes cultivating very easy.

Available Sizes: 1Ltr & 5Ltr

BIONOVA PREMIUM FERTILISERS

## The Missing Link



The Missing Link protects plants from damaging external influences, it stimulates the plant's natural defence system and significantly increases the yield.

Available Sizes: 250ml, 1Ltr & 5Ltr

BIONOVA PREMIUM FERTILISERS

## Veganics Grow/Bloom

NPK: Grow: 3-2-4 / Bloom: 2-2-5



Veganics Grow/Bloom is a 100% organic liquid nutrient and is particularly recommended for organic farming.

Available Sizes: 1Ltr & 5Ltr



BIONOVA PREMIUM FERTILISERS

## Vitasol

NPK: 1-0-3



Vitasol is an organic stimulator which develops a sweeter taste in any treated plant. The beneficial bacteria and mycorrhizal fungi inside Vitasol provide a high potency of uptake in sugars.

Available Sizes: 1Ltr, 5Ltr & 20Ltr

BIONOVA PREMIUM FERTILISERS

## X-Cel

NPK: 1-0-0



Bionova X-cel is the excellent stimulator to develop XL flowers, which can be applied to all sorts of flowers, fruits, vegetables and herbs. Bionova X-cel significantly increases yield quantity and yield quality of all tested crops!

Available Sizes: 250ml, 1Ltr & 5Ltr

BIONOVA PREMIUM FERTILISERS

## Coco Substrate Bag



Bionova Coco Bag uses an excellent and natural 100% coco substrate. This coco results in 12 litres of ready-to-use coconut substrate after adding water.

Available Sizes: 12L Bag



# THE POWER TO PERFORM

Powerfully concentrated nutrients for insane crop performance and yield, powered by science and research since 1993!





**RAW**  
**soluble™**

**100%**  
**SOLUBLE**



**NO FILLERS, NO DYES**

**AVAILABLE ONLY AT EASY GROW**



**FIND OUT MORE**

Scan here to find out more  
about the RAW Soluble  
product range.



# RAW= soluble™

Essential elements and bio-stimulant soluble powders. RAW Soluble is a fully water soluble additive line up, comprising of 12 essential elemental building blocks, to supplement your nutrient feeding program. When these supplements are individualised it allows the gardener maximum control.

**P**

FLOWER

## Phosphorus

Important cell division and development of new tissue.

**N**

GROWTH

## Nitrogen

Part of every protein in the plant, so it's required for virtually every process.

**K**

POWER

## Potassium

Boosts flower production & improves resistance to diseases and insects

**Si**

STRENGTH

## Silica

Increases growth rate - thicker cell walls also build bigger stems & branches.

**Ha**

+POTASH

## Humic Acid

Allows for the creation of micronutrients, increasing their bio-availability.

**KI**

MARINE

## Kelp

Rich in natural plant growth hormones and beneficial trace elements.

**Cam**

STRUCTURE

## Calcium/Mag

Extra magnesium can be helpful during fruiting and flowering.

**Bvi**

+MAG SULFATE

## B Vitamin

Adding B-vitamins directly to the nutrient solution helps the plant recover from stress.

**Yu**

FLOW

## Yucca

Helps water and nutrients penetrate deeper in to the root zone.

**Cm**

ENHANCE

## Cane Molasses

Cane molasses is an excellent source of carbon energy (food) for beneficial microbes.

**T**

TERPZ

## Terpz

RAW Terpz is formulated to maximise essential oil production.

**Fu**

UPTAKE

## Full Up

As a foliar spray, increases plant's oxygen levels uptake capacity.

**Gr**

ALL-IN-ONE

## Grow

A tested blend of 12 RAW Soluble plant nutrients, essential elements and supplements.

**BI**

ALL-IN-ONE

## Bloom

100% water soluble powdered all-in-one bloom. Costs less to produce more.

**Mgr**

BACTERIA & FUNGI

## Microbes Grow

RAW Grow Microbes are a specific group of beneficial bacteria and fungi.

**Mbl**

BACTERIA & FUNGI

## Microbes Bloom

RAW Bloom Microbes are a specific group of beneficial bacteria and fungi.

**Ez**

TECH GRADE

## Enzymes

RAW Enzymes are 100% soluble and compatible with all nutrient programs.

**Aa**

TECH GRADE

## Amino Acids

RAW Amino Acids are uncut, tech grade Amino Acids derived from L-glycine and L-glutamic acid.



RAW SOLUBLE

## RAW Grow

NPK: 7-4-5



RAW Grow is a tested blend of 12 RAW Soluble plant nutrients, essential elements and supplements. An optimal all-in-one base "Grow" horticultural fertiliser.

Available Sizes: 2oz, 8oz, 2lbs, 10lbs & 25lbs

RAW SOLUBLE

## RAW Bloom

NPK: 3-12-12



RAW Bloom is a tested blend of 12 RAW Soluble plant nutrients, essential elements and supplements. An optimal all-in-one base "Bloom" horticultural fertiliser.

Available Sizes: 2oz, 8oz, 2lbs, 10lbs & 25lbs

RAW SOLUBLE

## Amino Acids

NPK: 7-0-0



RAW Amino Acids are a tech grade soluble plant supplement that is compatible with all nutrient programs, from hobby to professional, soil to hydroponics.

Available Sizes: 2oz, 8oz, 2lbs & 25lbs

RAW SOLUBLE

## B-Vitamin



RAW B-Vitamin contains 1% vitamin B1 which is the highest concentration of water soluble vitamin B1 available to the home gardener. RAW B-Vitamin also contains 9% magnesium and is an optimal magnesium supplement.

Available Sizes: 2oz, 8oz, 2lbs & 10lbs

RAW SOLUBLE

## Calcium/Mag

NPK: 9-0-0



RAW Calcium/Mag has optimised the ratio of each element in a water soluble formulation of calcium nitrate and magnesium sulphate so that it doesn't leave the media salty.

Available Sizes: 2oz, 8oz, 2lbs & 25lbs

RAW SOLUBLE

## Cane Molasses

NPK: 0-0-1



RAW Cane Molasses is a highly concentrated, water soluble micronised molasses that gives all the benefits of liquid Molasses without all the mess.

Available Sizes: 2oz, 8oz, 2lbs, 10lbs & 25lbs





RAW SOLUBLE

## Enzymes



RAW Enzymes are uncut, tech grade enzymes. Active ingredients are cellulase, xylanase, and beta-glucanase. No fillers, no dyes.

Available Sizes: 2oz, 8oz, 2lbs & 10lbs

RAW SOLUBLE

## Full Up



Use RAW Full Up in conjunction with all nutrients and supplements. It is a beneficial supplement to all feeding schedules. It is also ideal for adding to foliar sprays and for creating optimal recipe solutions.

Available Sizes: 2oz, 8oz, 2lbs, 10lbs & 25lbs

RAW SOLUBLE

## Humic Acid

NPK: 0-0-4



RAW Humic Acid contains 59% humic acids derived from leonardite which is the most concentrated, water soluble humic acid product on the market today.

Available Sizes: 2oz, 8oz, 2lbs & 10lbs

RAW SOLUBLE

## Kelp

NPK: 0-0-1



RAW Kelp is 99% kelp extract from seaweed (*ascophyllum nodosum*). This product is fully water soluble. RAW Kelp is a beneficial supplement to all feeding schedules.

Available Sizes: 2oz, 8oz, 2lbs & 10lbs

RAW SOLUBLE

## Nitrogen

NPK: 20-0-0



RAW Nitrogen contains 20% ammonium nitrogen (N). It does not contain nitrates or urea which enables it to be applied at all stages of growth and bloom. Plants take up two forms of nitrogen: nitrate (N) and ammonium nitrogen only.

Available Sizes: 2oz, 8oz, 2lbs & 10lbs

RAW SOLUBLE

## Phosphorus

NPK: 9-61-0



RAW Phosphorus contains 61% pure water soluble phosphate (P). It also contains a small amount of ammonium nitrogen (9%) which plants can utilise during bloom.

Available Sizes: 2oz, 8oz, 2lbs, 10lbs & 25lbs



**100% SOLUBLE**



# Yucca

Helps water and nutrients penetrate deeper into the root zone. Creates a stable carbon source for plant growth promoting microorganisms in the root zone.

**RAW**  
**soluble™**



RAW SOLUBLE

## Potassium

NPK: 0-0-50



RAW Potassium contains 50% water soluble potash derived from potassium sulfate. RAW Potassium is a great product to battle against potassium deficiencies.

Available Sizes: 2oz, 8oz, 2lbs & 10lbs

RAW SOLUBLE

## Silica



RAW Silica contains 45% silicon dioxide which is the highest concentration of silicon dioxide available to the home gardener. RAW Silica is flowable and suspendable in water and naturally available to the plant.

Available Sizes: 2oz, 8oz, 2lbs, 10lbs & 25lbs

RAW SOLUBLE

## Microbes Bloom



Bloom Stage MICROBES are a specific group of Beneficial Bacteria and Fungi formulated specially for the Flower/Bloom Stage of plants.

Available Sizes: 2oz, 8oz, 2lbs & 10lbs

RAW SOLUBLE

## Yucca



RAW Yucca is made from 100% natural yucca extract from the plant Yucca Schidigera. It can be used as wetting agent for nutrient solutions and foliar sprays and is great for flushing excess salts from the root zone.

Available Sizes: 2oz, 8oz, 10lbs & 25lbs

RAW SOLUBLE

## RAW TerpZ

NPK: 0-0-22



RAW TerpZ is formulated to maximise essential oil production. Use with every feeding during all stages of plant growth. TerpZ is compatible with all growing media and nutrient programs.

Available Sizes: 0.5lbs & 2lbs

RAW SOLUBLE

## Microbes Grow



Grow Stage MICROBES are a specific group of Beneficial Bacteria and Fungi formulated specially for the Grow / Vegetative Stage of plants.

Available Sizes: 2oz, 8oz, 2lbs & 25lbs





# Choosing The Right Growing Medium

”  
**Different media affect water retention, aeration, and nutrient delivery, which ultimately impacts how vigorously your plants develop.**


When it comes to cultivating healthy plants—whether in hydroponics or traditional gardening—the growing medium you choose plays a pivotal role. Different media affect water retention, aeration, and nutrient delivery, which ultimately impacts how vigorously your plants develop. By understanding the strengths and weaknesses of each option, you can select a medium that perfectly aligns with your plants’ needs and your overall growing goals.

Coco coir is a versatile favourite for many growers. Made from coconut husks, it offers excellent water retention while remaining light and airy, allowing roots to access both moisture and oxygen. It also boasts a near-neutral pH, making it easier to maintain the ideal conditions for nutrient absorption. Brands like Athena, Green Planet, Remo Nutrients, and BioTabs all work well with coco coir, as it doesn’t require drastic pH adjustments when used correctly.

Rockwool, on the other hand, is a tried-and-true hydroponic staple. Spun from molten rock into fibrous cubes or slabs, it retains water efficiently without compressing, giving roots plenty of space for air circulation. However, rockwool tends to have a higher initial pH and can shed tiny





A close-up photograph of a person's hands, wearing a grey work jacket, gently holding a small green seedling with five leaves. The seedling is growing out of a mound of dark, rich soil. The background is a blurred field of similar soil.

fibres that irritate skin and lungs during handling. Proper pH pre-soaking and safety measures can help manage these minor drawbacks, making rockwool a solid choice if you're comfortable with a bit of extra prep work.

Clay pebbles, often called LECA (Lightweight Expanded Clay Aggregate), are another popular option. Their large, porous structure encourages good drainage and airflow, reducing the risk of waterlogging. They can be reused multiple times, which appeals to eco-conscious growers. However, clay pebbles do not hold water as effectively as coco coir or rockwool, meaning you'll likely need more frequent watering. Used in conjunction with regular nutrient checks, this medium can deliver strong, robust root systems—particularly in recirculating hydroponic setups like ebb and flow.

Perlite and vermiculite also make regular appearances in both hydro and soil-based mixes. Perlite improves aeration and drainage, while vermiculite boosts water retention. Some growers blend the two for a balanced medium, ideal for delicate seedlings that need a reliably moist environment without risk of root rot. Because these materials tend to be lightweight, you may need additional structural support for larger plants, but they're cost-effective and easy to source.

Ultimately, choosing the right medium is all about balancing moisture, aeration, and ease of use. A medium that supports ample oxygen at the roots while providing consistent hydration will set the stage for vigorous growth—no matter which nutrient line you favour. By taking the time to assess each medium's properties and consider the specific demands of your plants, you'll be well on your way to cultivating a thriving, productive garden.







**REMO**  
NUTRIENTS

# MADE BY GROWERS FOR GROWERS



AVAILABLE EXCLUSIVELY AT EASY GROW

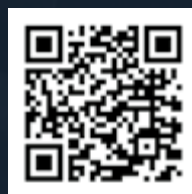




# EVERYTHING YOUR PLANTS NEED AND NOTHING THEY DON'T

Remo Nutrients was truly spawned from a passion for growing. As "Urban Remo", Remo has helped thousands of people to learn the skills necessary to produce a world class product. His expertise covers all levels of growing and has landed him 34 awards, worldwide.

Remo brings his vast experience to Remo Nutrients, creating products that offer a complete system of the vitamins, minerals, and extracts that your plants need to achieve their maximum growth potential. By using pharmaceutical grade ingredients, our system opens up your garden's growth potential to the maximum degree.



## FIND OUT MORE

Scan here to find out more about the REMO Nutrients product range.



REMO NUTRIENTS  
**REMO Grow**  
 NPK: 2-3-5



Remo's Micro, Grow, and Bloom bring a quality and simplicity to your garden. Our proprietary blend of macro and micronutrients provide your plants with the foundation needed to achieve maximised yield.

Available Sizes: 1Ltr, 5Ltr, 10Ltr & 20Ltr

REMO NUTRIENTS  
**REMO Bloom**  
 NPK: 1-4-7



Remo's Micro, Grow, and Bloom bring a quality and simplicity to your garden. Our proprietary blend of macro and micronutrients provide your plants with the foundation needed to achieve maximised yield.

Available Sizes: 1Ltr, 5Ltr, 10Ltr & 20Ltr

REMO NUTRIENTS  
**REMO Micro**  
 NPK: 3-0-1



Remo's Micro, Grow, and Bloom bring a quality and simplicity to your garden. Our proprietary blend of macro and micronutrients provide your plants with the foundation needed to achieve maximised yield.

Available Sizes: 1Ltr, 5Ltr, 10Ltr & 20Ltr

# SUPERCHARGE YOUR GROW



KIT INCLUDES: MICRO (x2), BLOOM (x2), GROW, ASTROFLOWER, MAGNIFICAL, NATURE'S CANDY & VELOKELP

REMO NUTRIENTS  
**Super Charged Kit**



The Remo Supercharged Nutrient Kit offers a complete feeding programme to satisfy your plants from start to finish.

1Ltr Kit Includes: Micro (x2), Bloom (x2), Grow, AstroFlower, MagNifiCal, Nature's Candy & Velokelp bottles.



REMO NUTRIENTS

## AstroFlower

NPK: 1-6-11



AstroFlower is a potent source of Potassium and Phosphorous, designed to complement our Micro and Bloom nutrient products during the flowering stage of growth.

Available Sizes: 1Ltr, 5Ltr, 10Ltr & 20Ltr

REMO NUTRIENTS

## VeloKelp

NPK: 1-1-1



VeloKelp's amazing formula is packed with vitamins and multiple seaweed extracts and is recommended for use during all stages of growth, including propagation.

Available Sizes: 1Ltr, 5Ltr, 10Ltr & 20Ltr

REMO NUTRIENTS

## MagNifiCal

NPK: 3-0-0



MagnifiCal is a Calcium and Magnesium supplement that is super-chelated, resulting in a quick uptake to your plants. Our formula has been designed to enhance absorption rates and help with deficiencies.

Available Sizes: 1Ltr, 5Ltr, 10Ltr & 20Ltr

REMO NUTRIENTS

## Nature's Candy



Our unique blend of carbohydrates and amino acids is extremely beneficial for all stages of development.

Available Sizes: 1Ltr, 5Ltr, 10Ltr & 20Ltr



# JOIN THE REMO REVOLUTION





# FREQUENTLY ASKED QUESTIONS

## WHEN USING THE FULL LINE OF REMO NUTRIENTS AS DIRECTED, DO I NEED TO FEED ANYTHING ELSE TO MY PLANTS?

Your plants don't "need" anything else. The most common things that people add are enzymes or microbial products, but these are optional.

Both of these are completely fine to add to the Remo line. It's always good to check with us before adding any additional products – most likely they won't cause any harm, but more often than not, the ingredients are already included in the Remo line.

## WHEN DO I START FEEDING NUTRIENTS TO MY PLANTS?

For seeds: When you see the first set of mature leaves, which is usually about 2 weeks after germination. Before that, they are getting all the nutrients they need from the seed itself.

For cloned and established plants: As soon as the plants are rooted, they're pretty much ready to go.

## HOW OFTEN DO I NEED TO FEED NUTRIENTS TO MY PLANTS?

Because plants uptake Remo Nutrients so easily, it's important to make sure they are fed regularly to avoid deficiencies. Typically a plant should be watered/fed every other day and we recommend feeding every time you water, but this comes down to grower's preference.

It's fine to include straight water once in a while but we don't recommend skipping nutrients in more than one out of every 2 or 3 feeds (feed-feed-water or feed-feed-feed-water).

## MY PLANTS AREN'T LOOKING HAPPY AND I'M NOT SURE WHY. CAN YOU HELP ME WITH THIS?

We are always happy to help any grower using our nutrients, whether your problem is nutrition related or not. You can contact us via DM on any of our social channels, through the Contact page on our website, or by calling us toll-free at 1-855-HEY-REMO (hours: M-F, 8:30-4:30 PST). We have many growers on staff and our main goal is for you to have happy, healthy plants.

## DOES IT MATTER WHICH ORDER I MIX THE NUTRIENTS?

No. The nutrients are all chelated, so they will mix up regardless of the order you add them.

## WHAT SHOULD MY NUTRIENT SOLUTION PH BE?

For optimal nutrient uptake in most plants, the pH of your nutrient solution should be between 5.8 and 6.5.

## DO I NEED TO USE REVERSE OSMOSIS (RO) WATER WITH REMO NUTRIENTS?

Our feed chart is meant to be used with RO water (that means the water has very little or no TDS/EC). Treated (municipal) water is almost always fine if the TDS content is below 200ppm.

If well water is being used, you may need to make adjustments if you are in an area that has very hard ground water...and, as a general rule, if you wouldn't drink the water, don't grow with it.

## I'VE NOTICED MY PPMS WITH REMO NUTRIENTS COME IN AT A LOT LOWER THAN COMPETING BRANDS. DOES THIS MEAN IT'S NOT AS STRONG?

No. We use high quality chelated ingredients, and no chlorides or carbonates. This means that the plants uptake them quickly and easily, and there is very little "waste" that the plant is not uptaking. Our PPMs do come in lower, but that doesn't mean that the plant is getting less nutrients. It also means that our nutrients flush out more rapidly at the end of the cycle, resulting in a cleaner final product.

## CAN I FOLIAR FEED WITH REMO PRODUCTS?

Yes, either or both Velokelp and Magnifical can be used as a foliar spray at a rate of 10ml/L (maximum) each. However, the best way to feed your plants is through the roots. Foliar feeding with Velokelp is useful in the very beginning stages of growth (clones, seedlings) and to quickly relieve your plants from any high stress situations (e.g. transplant shock). Foliar feeding with Magnifical is useful for quick deficiency fixes.

You can mix the two concentrated products together ahead of time in one bottle for convenience but if you do this, you should use the pre-mix within 24 hours.

## WHAT GROW MEDIUM DO YOU RECOMMEND?

Coco coir is generally what we recommend, as it is very easy to work with and it has very little nutrient charge, so you have complete control over your plants' nutrient needs. However, Remo Nutrients can be used with any grow medium. Regardless of what you use, it's best to check whether the medium already has nutrients added before jumping in.



# GET BACK TO BASICS WITH REMO ELEMENTS



REMO NUTRIENTS / ELEMENTS

## Part A Foundation

NPK: 7-12-15

REMO NUTRIENTS / ELEMENTS

## Part B Cal Mag

NPK: 14-0-9

REMO NUTRIENTS / ELEMENTS

## Supercharged Boost

NPK: 0-23-44



Part A contains a full spectrum of micro and macronutrients essential to keep your plants thriving. Our proprietary blend of chelated minerals and pharmaceutical grade ingredients are ideal for optimal nutrient uptake.

Available Sizes: 250g & 1kg

Part B is designed to complement Part A and will provide essential calcium and magnesium needed for your plants. It also contains a nitrogen boost, so you can adjust your levels and prevent deficiencies as needed by increasing or reducing Part B.

Available Sizes: 250g & 1kg

SUPERCHARGED® Boost is a powerful phosphorous and potassium supplement that is developed to be used only in the flowering stage of development.

Available Sizes: 250g & 1kg



**TERP & PURP  
BOOSTER**  
by plantlife  
NUTRIENTS

# BOOST YOUR



# TERPS & PURPS



SCAN ME  
FOR MORE  
INFO

PURP & TERP TERPENE ENHANCERS BY  
PLANT LIFE NUTRIENTS





by **plant life**

**TERP & PURP  
BOOSTER**  
by plantlife  
NUTRIENTS

# LAUNCH YOUR PLANTS INTO ANOTHER DIMENSION!

Purp Booster is a powerful plant nutrient formula designed to enhance the development of purple terpenes during growth.



PLANT LIFE NUTRIENTS

## **Terp Booster**

NPK: 0-0-4



Terp Booster is a specialised formula designed to enhance the essential oil production in flowering and fruiting plants, which can ultimately affect the aroma, flavour, and overall quality of the fruits and flowers.

Available Sizes: 1Ltr, 5Ltr, 10Ltr & 20Ltr

PLANT LIFE NUTRIENTS

## **Purp Booster**

NPK: 0-0-1



Purp Booster is a powerful plant nutrient formula designed to enhance the development of purple pigmentation during growth. With an NPK ratio of 0-0-1, it supports natural terpene production without overloading your plants with unnecessary nutrients.

Available Sizes: 1Ltr, 5Ltr, 10Ltr & 20Ltr



Order online from one of our online retailers • [www.easy-grow.co.uk/store-locator/](http://www.easy-grow.co.uk/store-locator/)

HYGROZYME®

# RESULTS ABOVE START BELOW

Hygrozyme is a pioneering company dedicated to developing innovative solutions for growers worldwide. With a strong commitment to research, sustainability, and plant health, Hygrozyme formulates high-quality products designed to optimise growing conditions and enhance plant vitality.



SCAN ME  
FOR MORE  
INFO



## HYGROZYME Hygrozyme



A powerful blend of concentrated, beneficial enzymes specifically formulated to prevent root rot by accelerating the breakdown of dead root matter—a process that unlocks essential nutrients for your plants.

Available Sizes: 500ml, 1Ltr, 4Ltr, 10Ltr & 20Ltr

## HYGROZYME Hyclean



A non-toxic, biodegradable, and environmentally friendly cleaner that removes and prevents the buildup of salts and minerals in irrigation lines and grow media.

Available Sizes: 500ml, 4Ltr & 20Ltr



HYGROZYME

## Hygroben



HYGROBEN™ is a microbial root inoculant composed of 5 different bacillus species that are shown to be physiologically compatible with each other and work together to enhance yield.

Available Sizes: 500ml, 1Ltr, 4Ltr, 10Ltr & 20Ltr

HYGROZYME

## Hyshield



An all-natural product that stimulates your plant's immune system. Improving plant survival in high heat & cold environments.

Available Sizes: 500ml, 1Ltr, 4Ltr, 10Ltr & 20Ltr

HYGROZYME

## Hygropunch



HYGROPUNCH™ is an OMRI listed broad spectrum contact insecticide, miticide and fungicide product containing essential oils for the control and suppression of pests and diseases such as Powdery Mildew.

Available Sizes: 500ml, 1Ltr, 4Ltr & 20Ltr

HYGROZYME

## Nutrient A + B

NPK: A: 3-0-1 / B: 1-3-5



Nutrient A & B is complete 2-part nutrient solution that contains the necessary primary, secondary, and micronutrients required for the healthy development of your plants.

Available Sizes: Ltr & 4Ltr

**GROW SMARTER. GROW STRONGER.  
GROW WITH HYGROZYME.**







MICROBE LIFE HYDROPONICS

### Foliar Spray & Root Dip



Combines the high concentration of photosynthetic cultures with natural, rare earth humates and essential elements for improved plant biology.

Available Sizes: 473ml & 946ml

MICROBE LIFE HYDROPONICS

### Photosynthesis Plus



Enhances plant functions at the foliar level and the root zone in both soil and soil-less substrates. Promotes plant vigour and reduces input costs while increasing yields.

Available Sizes: 946ml & 3.785Ltr

MICROBE LIFE HYDROPONICS

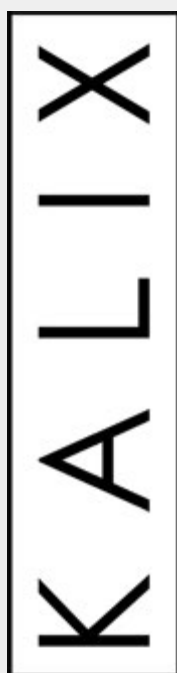
### Vegetable & Fruit Yield Enhancer



A highly active and balanced blend of microbes and humic substances that combines photosynthetic cultures and essential elements.

Available Sizes: 473ml & 946ml





KALIX SOLUBLE SOLUTIONS

## Kalix Base

NPK: 14-0-0



Fully Water Soluble Hydroponics Ready. Fertiliser for fertigation of soil and soilless crops. Can be used in Foliar applications.

Available Sizes: 2lb

KALIX SOLUBLE SOLUTIONS

## Kalix Grow

NPK: 3-7-21



Fully Water Soluble Hydroponics Ready. Fertiliser for fertigation of soil and soilless crops. Can be used in Foliar applications.

Available Sizes: 2lb

KALIX SOLUBLE SOLUTIONS

## Kalix Bloom

NPK: 0-11-22



Fully Water Soluble Hydroponics Ready. Fertiliser for fertigation of soil and soilless crops. Can be used in Foliar applications.

Available Sizes: 2lb

KALIX SOLUBLE SOLUTIONS

## Kalix Profile

NPK: 0-0-22



Fully Water Soluble Hydroponics Ready. Specialty fertiliser for fertigation of soil and soilless crops. Increases nutrient availability. Opens Calcium Ion Channels & Increases Brix.

Available Sizes: 2lb

KALIX SOLUBLE SOLUTIONS

## Kalix The System Variety Pack



Everything you need for full flavour and heavy yields. Each 2 LB pouch makes 4 L of liquid concentrate.

Pack Contains: 2lb Base, 2lb Grw, 2lb Bloom & 2lb Profile







# Plant Propagation

Easy Grow's plant propagation range includes top-quality trays & accessories. Designed for both novice and expert gardeners, these products ensure successful propagation and healthy seedling development.










SCAN ME  
FOR MORE  
INFO

**Plug Life®**  
STRAIGHT OUTTA COMPOST

**UK'S BEST  
SELLING  
PLUG**

**GROW  
LIKE A  
BOSS**

PLUG LIFE®  
**Peatmix**



Meet Peatmix – a premium propagation plug made from an expert blend of 80% peat and 20% coco peat, delivering the rich, earthy benefits of peat with the added structure and drainage of coco.

Cells Per Tray: 104 | pH: 5.7 ± 0.2 | EC: 0.8 ± 0.2

PLUG LIFE®  
**Coco**



Say hello to Coco – a premium propagation plug made entirely from 100% coco peat, designed for growers who want clean, consistent, and reliable rooting performance straight out of the box.

Cells Per Tray: 104/14/12 | pH: 5.7 ± 0.2 | EC: 0.8 ± 0.2

PLUG LIFE®  
**Dr. Dri**



Dr. Dri is a high-performance propagation plug designed for faster rooting, smoother transplanting, and seamless use in any system. As a dry plug, Dr. Dri stays clean, lightweight, and easy to handle simply add water to hydrate and it's ready to go.

Cells Per Tray: 104 | pH: 5.8 ± 0.2 | EC: 1 ± 0.2



PLUG LIFE®

## Peatmix, Coco & Dr. Dri Gold Bags

6 & 18  
PLUG BAGS!



Take the guesswork out of propagation with Plug Life's range of pre-formed bagged plugs – designed for growers who demand consistency, convenience, and superior root development. Available in Coco, Peat Mix, and the innovative new Dr. Dri plugs, this range covers every propagation style.

Perfect for nurseries, commercial growers, and hobbyists alike, Plug Life bags help streamline your propagation process, reduce waste, and ensure every cutting or seed gets the best start possible.

Available in 6 & 18 Plug Bags

PLUG LIFE®

## Specialmix



Say hello to Specialmix – a next-generation propagation plug made from a carefully balanced blend of cocopeat, peat, and perlite, wrapped in a biodegradable mesh to maintain uniform shape and structure.

Cells Per Tray: 104

PLUG LIFE®

## Big Phat Mother Plugger



Meet the Big Phat Mother Plugger – a chunkier, beefed-up plug, crafted for growers who want maximum rooting potential and room to grow right from the start.

Cells Per Tray: 77

PLUG LIFE®

## Wood Fibre



Introducing WoodFibre – a 100% woodfibre propagation plug designed for growers who want a clean, sustainable start without compromising on structure, performance, or root development.

Product Dimensions:  
1181.2 x 1091 x 105.7mm

PLUG LIFE®

## Propagator



Designed with the needs of both novice and experienced gardeners in mind, this propagation tray is the key to successfully starting your gardening journey or expanding your botanical collection.

Product Dimensions:  
1181.2 x 1091 x 105.7mm

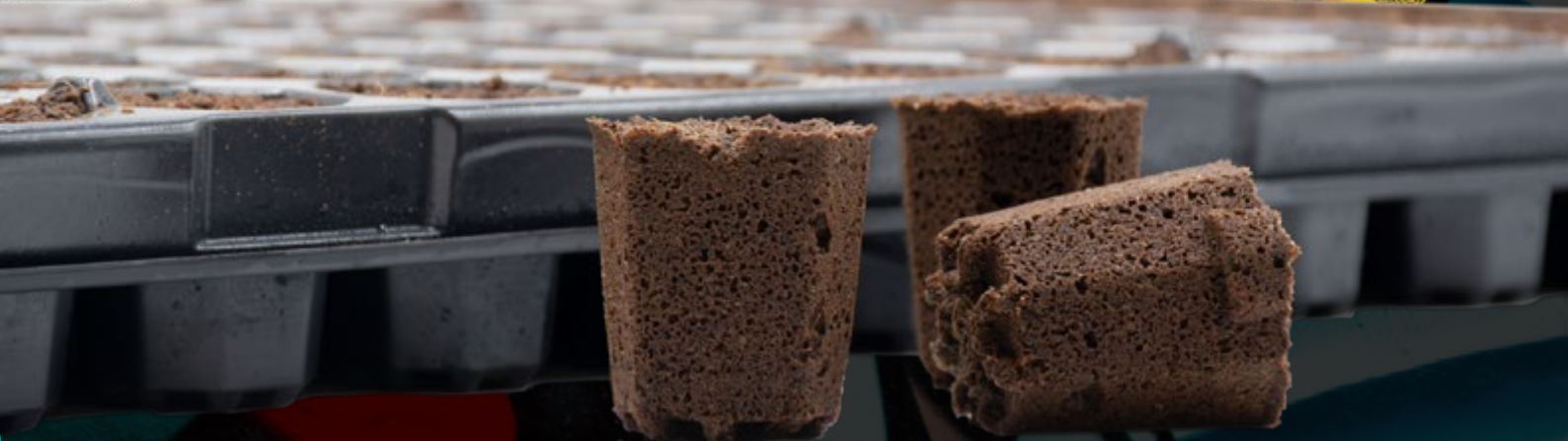




UK'S BEST  
SELLING  
PLUG

# Plug Life®

## STRAIGHT OUTTA COMPOST



Cultivate with confidence using our premium range designed for every stage of plant growth. From seedling to harvest, Plug Life delivers the nutrients, tools, and support you need to grow healthier, stronger plants.



Order online from one of our online retailers • [www.easy-grow.co.uk/store-locator/](http://www.easy-grow.co.uk/store-locator/)



# Air & CO2 Enrichment

Easy Grow's CO2 enrichment products, from top brands like Exhale Co2 Bags, enhance plant growth and yields. Ideal for professional and amateur gardeners, they ensure optimal indoor gardening conditions.



EXHALE CO<sub>2</sub>

## ExHale Regular



This is the standard model for our bag design. Just as powerful as any of our bags, this one comes pre-enoculated and ready to go. It is breathing CO<sub>2</sub> as soon as you take it home. Always check the replacement date on the back label to ensure freshness.

Size: Regular (One Size)  
Area of Effect: 1.2m<sup>2</sup>

EXHALE CO<sub>2</sub>

## ExHale XL



The XL bag is just that, extra-large. It's the same as the regular bag but twice the size. This is the bag for the grower who needs big CO<sub>2</sub>. It lasts for up to 12 months, and the only other major difference besides the weight is that the breather patch is bigger too.

Size: XL (One Size)  
Area of Effect: 1.8m<sup>2</sup>

CO<sub>2</sub>  
Carbon dioxide

## Efficiency, Control & Sustainability.

AIR & CO<sub>2</sub> ENRICHMENT  
**The CO<sub>2</sub> Box**

Delivers 3 weeks of optimal CO<sub>2</sub> levels for accelerated plant growth and increased plant yields & metabolism. Enhance your indoor cultivation experience with our reliable CO<sub>2</sub> Boost Pack.

Size: One Size  
Area of Effect: 1.2m x 1.2m x 1.2m






# DOES CO2 REALLY IMPROVE YIELDS OR JUST MAKE FOR A HEALTHIER PLACE?

The answer is both. The goal of CO2 enrichment is to reduce the time from seedling to harvest and to speed up growth and increase yields. Plants grown with elevated CO2 are more able to resist insects and diseases, which makes for a healthier plant. In a study, lettuce was grown in a greenhouse with ambient air versus lettuce grown in a greenhouse with CO2 enrichment. The test showed the lettuce grown in the greenhouse with ambient air was ready to harvest in 59 days. In the greenhouse with CO2 enrichment the lettuce was harvested in 48 days.


By weight the CO2 enriched greenhouse lettuce weighed 30% more. In studies here at our farm, we have found that by supplying tomato plants with elevated CO2, those plants produced 20% more fruit (more tomatoes) than those plants that did not receive the elevated CO2. By harvestable weight the plants receiving more CO2 out produced those without by 25%.



Tests performed on strawberries showed that strawberries grown with elevated levels of CO2 contained more sugars and physical mass to support a greater number flowering sites. The fact that there were more flowering sites led to a greater number of strawberries being formed and therefore led to more overall production.



The ExHale bag contains a patented mycelium that releases CO<sub>2</sub> as it grows—no fruiting needed. Once activated, it feeds on its substrate and emits CO<sub>2</sub> continuously for 6 months.





# EXHALE FAQ



The Exhale is an idea that brings an important part of nature back to the indoor garden, CO<sub>2</sub>. Indoor gardening is a complex business and hobby. To do it right all the needs of a plant must be taken into consideration and more times than not, in an affordable way.

## WHY IS CO<sub>2</sub> IMPORTANT?

Photosynthesis is the process by which plant leaves make carbohydrates. Sunlight, CO<sub>2</sub> and water are converted into carbohydrates and O<sub>2</sub> by the action of chlorophyll in the chloroplasts of the plant.

Plants growing indoors under artificial light often lack enough CO<sub>2</sub> to efficiently photosynthesise. When plants are able to maximise the process of photosynthesis, the results are larger plants with larger yields.

## HOW BIG A SPACE CAN EXHALE BAGS COVER?

The ExHale Cultivator is designed for small to medium grow spaces, providing 4 to 6 plants with the CO<sub>2</sub> they need.

Growing in larger spaces requires more bags but the effects are the same!

## DO I NEED TO TURN IT ON?

The only bag that requires activation is The ExHale 365 bag.

After removing the hanger, move the mycelial mass onto the substrate. In roughly two weeks your bag will be producing its full CO<sub>2</sub> capacity.

## WHERE DO I PLACE THE EXHALE BAG IN MY TENT OR GROW ROOM?

Because CO<sub>2</sub> is heavier than air we recommend hanging the bag one to two feet directly above your plants. Each bag comes with a hanger but how you attach it is up to you. After hanging your bag, a continuous shower of CO<sub>2</sub> will fall directly onto your plants. This is the most efficient way to deliver the CO<sub>2</sub> they need 24 hours a day for up to six months.

## WHAT IS THE OFFICIAL FLOW RATE OF ONE OF THESE BAGS

Here is our official CO<sub>2</sub> Flow Information:

+/-0.5 ft3 per minute of 2500-3000ppm enriched CO<sub>2</sub>

130,000 cubic feet 2500-3000ppm enriched CO<sub>2</sub>

## WILL MY BAG GROW MUSHROOMS?

The ExHale bag is a non-fruiting mushroom bag which means its a single mass of mycelium and you will not see classic mushrooms forming.

The ExHale strain was developed for the purpose of CO<sub>2</sub> production. There are other products that claim CO<sub>2</sub> production, and while they do produce CO<sub>2</sub>, they are actually strains that are meant for food production.

## DOES CO<sub>2</sub> HELP WITH CLONES & ROOTING?

An often overlooked and under studied aspect of plant response to CO<sub>2</sub> is on the below ground processes. When exposed to increased CO<sub>2</sub>, roots have been observed to become more numerous, longer, thicker, and faster growing in many plant species. When cloning plants, root growth appears 3-5 days sooner with CO<sub>2</sub> enrichment versus without.

Although some things are known about root responses to CO<sub>2</sub> enrichment, much remains to be learned. Nevertheless, it is clear that plant roots, like other parts of the plant, typically do better in CO<sub>2</sub> enriched air versus ambient air.

## WHAT DOES LIGHT HAVE TO DO WITH CO<sub>2</sub>?

Photosynthesis has two parts. The light dependent reactions and the light independent ones. The light dependent part is the use of light to "steal" electrons from water. This is the process that produces oxygen. The light independent part is carbon fixation.

Plants produce CO<sub>2</sub> during respiration when they break down sugars just as humans do. They do this day and night, but during photosynthesis they tend to take more CO<sub>2</sub> out of the air than they put in. They reduce CO<sub>2</sub> output during the carbon fixation steps of the lightindependent reactions of photosynthesis. Both processes go on all of time, except carbon fixation tends to be more active during the day. They only release Oxygen during the day since they require light to do it.

## CAN YOU HAVE TOO MUCH CO<sub>2</sub>?

Photosynthesis has two parts. The light dependent reactions and the light independent ones. The light dependent part is the use of light to "steal" electrons from water. This is the process that produces oxygen. The light independent part is carbon fixation.

Plants produce CO<sub>2</sub> during respiration when they break down sugars just as humans do. They do this day and night, but during photosynthesis they tend to take more CO<sub>2</sub> out of the air than they put in. They reduce CO<sub>2</sub> output during the carbon fixation steps of the lightindependent reactions of photosynthesis. Both processes go on all of time, except carbon fixation tends to be more active during the day. They only release Oxygen during the day since they require light to do it.



# Horticultural Lighting

Easy Grow's horticultural lighting products, featuring top brands like Faven Lighting and Lumatek, ensure optimal plant growth. Ideal for all gardening levels, they provide efficient, high-quality lighting solutions for indoor cultivation.

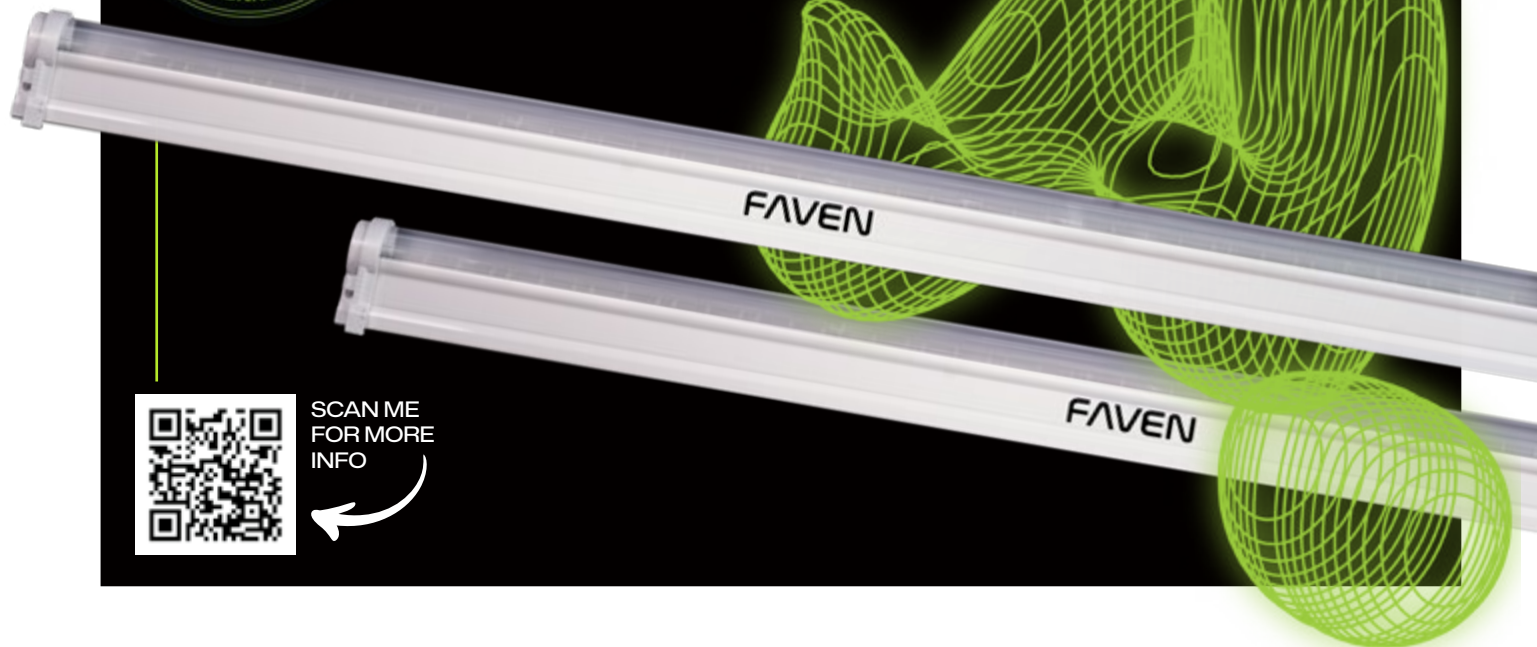






# LIGHT UP.

And get growing/



SCAN ME  
FOR MORE  
INFO



FAVEN LIGHTING

## Faven Starter Pack



Everything you need to get started with a new Faven Lighting System.

This pack contains an R8 Light, 2 x Adjustable Stands, a Controller & Power Cable.

FAVEN LIGHTING

## Faven R8 (Single)



Faven's under canopy lights are the best way to improve the yield and health of your plants with minimal increase to operational costs. Made to supplement overhead light installations.

This pack contains a single light - no accessories.

FAVEN LIGHTING

## Faven R8 (Multipack)



Faven's under canopy lights are the best way to improve the yield and health of your plants with minimal increase to operational costs. Made to supplement overhead light installations.

This pack contains 4 lights - no accessories.





# MAXIMUM CONTROL.

FAVEN LIGHTING

## Faven Mini Controller



The Mini-Controller by Faven is a 0-10v dimming option for cultivators who want to control the intensity of their fixtures without using a primary lighting controller.

One Per Pack

FAVEN LIGHTING

## Adjustable Stand



Adjustable stands for Faven under canopy lights. Adjust heights between 8", 10" and 12".

2 Stands per Pack

FAVEN LIGHTING

## Faven Jumper Cable



These extension cables makes it possible to daisy chain multiple Faven under canopy lights. Links together two lights that don't directly connect into each other.

Available Sizes: 1Ltr, 5Ltr, 10Ltr & 20Ltr

FAVEN LIGHTING

## Faven Power Cord



10 ft power cable for Faven under canopy LED lights. This cable works for both the R6 and R8 lights.

Available Sizes: 1Ltr, 5Ltr, 10Ltr & 20Ltr





# LIGHT UP.

And get growing/

FAVEN

FAVEN



## YIELD & QUALITY

25-30% average increase in yield and superior plant quality.



## MODULAR DESIGN

Fewer wires involved with Favens modular light link up design.



## DIMMER CONTROLS

Faven Dimmer controllers available, giving you ultimate control.



## POWER UP

One power cable can power up to 20 individual Faven lights.



## WATER & DUST PROOF

Faven lighting systems boast a IP 66 Rating for water & dust resistance.



## EXTENDABLE STANDS

Stands available, adjusts height between 8", 10" & 12".





## Under Canopy LED Multi-Tier

### Case Study: Amplified Farms – Lighting Innovation for Specialist Cultivation

Founded in 2014 by three friends, Amplified Farms quickly built a reputation for high-quality, small-batch indoor cultivation. Now operating with a 12-person team, they supply over 75 specialist retailers across California.

Known for their attention to detail and premium results, the team has received multiple awards for product consistency and standout varieties.

Early adopters of LED lighting, including under-canopy systems, Amplified Farms took part in a pioneering utility-funded project with SMUD. Their involvement helped shape a regional LED rebate programme and attracted national attention. Today, they continue to use a blend of LED and HPS lighting for optimal crop performance.





RESULTS	BEFORE FAVEN	AFTER FAVEN
Yield	62.4gs/sqft	90.8gs/sqft
Smalls Ratio	6:1 (16%)	15:1 (6%)
Uniformity of Colour/Maturity	Up to 12% green product	0% green product
Plant Labour	110 Man Hours	60.5 Man Hours 45% Reduction

## IMPLEMENTATION:

Amplified Farms took a staggered approach to installing Faven Under Canopy Lighting. They began with the top tier of their grow room, allowing a direct comparison between lit and unlit sections. This method helped them assess the impact on yield and environment while managing upfront costs. Profits from the initial install were reinvested to expand lighting to the lower tier.

Top Light Brand	120 Fluence Spyder
Faven Units	240 R8's
Benching Brand	Montel
Irrigation Delivery	Netafim Drip
Nutrients	Custom Blend
Substrate Type & Size	1 Gallon Coco
Planting Density	9-12 Plants per 4'x4'
Typical Flower Duration	63 Days
Typical Veg Duration	12 Days
Monitoring Platform	Aroya
Controller used for Favens	Grow Flux



Faven Under Canopy Lights are the best purchase Amplified has ever made.

The product is top notch and the entire team is a dream to work with.

**GREG HARTNETT**  
Co-Owner of Amplified Farms

## ADDITIONAL BENEFITS:

In a highly competitive market, Amplified Farms aimed to improve crop quality by reducing lower-value yields. With Faven lighting, they eliminated green buds and improved their smalls ratio from 6:1 to 15:1 (16% to 6%). They also cut plant work labour costs by 45%, focusing more on de-leafing and less on removing lower growth.





**LUMATEK**  
PROFESSIONAL LIGHTING

# UNBEATEN ON PERFORMANCE & RELIABILITY.

DESIGNED  
& ENGINEERED  
BY LUMATEK  
IN THE UNITED  
KINGDOM



LUMATEK LED LIGHTING  
**Zeus Xtreme 1000w**



Lumatek introduces to growers the most powerful grow light on the market, the Zeus 1000W Xtreme PPFD CO2 LED. Raising the benchmark for horticultural lighting.

Product Dimensions:  
1181.2 x 1091 x 105.7mm

LUMATEK LED LIGHTING  
**Zeus 1000w Pro**



Meet the Zeus 1000W Pro, innovating with a unique frame giving you a unique coverage on the LED horticultural industry due to its pioneering rectangular shape.

Product Dimensions:  
1700 x 1219 x 48.2mm

LUMATEK LED LIGHTING  
**Zeus Pro 2.9 600w**



The higher specification Lumatek Zeus Pro 2.9 is a linear multi-light bar fixture producing very high levels of PPF of 1770  $\mu\text{mol/s}$  and a very high efficacy of up to 2.9  $\mu\text{mol/J}$ .

Product Dimensions:  
1091 x 1182.4 x 51.9mm



LUMATEK LED LIGHTING

## Zeus Pro 465w Compact



The higher specification Lumatek Zeus 465W Pro Compact LED is a linear multi-light bar fixture producing very high PPF of 1256  $\mu\text{mol/s}$  and a Photon Efficacy of 2.7  $\mu\text{mol/J}$ .

Product Dimensions:  
998 x 900 x 51.9mm

LUMATEK LED LIGHTING

## ATTIS 300w



The Lumatek ATS series is a range of full spectrum LED grow lights featuring top bin LUMLED LEDs and dimmable Lumatek drivers.

Product Dimensions:  
558.2 x 558.2 x 86.8mm

LUMATEK LED LIGHTING

## 100w Light Bar



The Lumatek 100W full-spectrum individual supplemental light LED bar with a 100W remote driver is a flexible and dynamic LED solution to improve your grow results.

Product Dimensions:  
1148 x 20 x 53mm

LUMATEK LED LIGHTING

## Digital Panel Plus (HID+LED)



The LUMATEK Digital Panel PLUS 2.0 (HID+LED) is a dual signal digital lighting controller that offers precise external control of your Lumatek lighting fixtures, drivers and ballasts.

Product Dimensions:  
125mm x 80mm x 25mm

LUMATEK LED LIGHTING

## Utopia 600w/630w DE CMH/HPS



The Lumatek Utopia 630/600 DE CMH/HPS controllable ballast powers both high-voltage CMH and HPS grow lamps – which are the most efficient HID light source for horticulture farming.

No Lamp Included

LUMATEK LED LIGHTING

## 630w DE3100K CMH Lamp



CMH Lamp 630W 3100/4200K 240V, a Double-Ended (DE) high frequency pulse-start lamp, has been engineered for use with Lumatek 630W DE CMH electronic ballast.

Lamp Power: 630w







# Plant Health

Easy Grow's plant health products promote robust growth and disease resistance. Ideal for all gardeners, these high-quality solutions ensure vibrant, healthy plants year-round, enhancing overall garden vitality.



PLANT HEALTH

## Mighty Wash



NPK Industries presents Mighty Wash. Spray Mighty Wash on fruits, vegetables, foliage and flowers. Mighty Wash may be used on indoor, outdoor and greenhouse plants.

Sizes Available: 1Ltr, 5Ltr, 10Ltr & 20Ltr

PLANT HEALTH

## Seed Excel



Use Seed Excel for rapid seed germination, stronger roots, to overcome dormancy and increase plant growth.

Sizes Available: 60ml 250ml & 1Ltr

PLANT HEALTH

## pH Control Dosing Pump



The pH control dosing pump from prosystemaqua provides fully automated pH control of aqueous solutions in hydroponic and aquaponic systems. Available 25/500 per hour. Personal requirements on request.

Product Dimensions:  
125mm x 80mm x 25mm

PLANT HEALTH

## Lightite Pot Tops



Lightite Pot Top covers are an innovative product designed to benefit the health and growth of your plants. 100% Lightproof to help protect and develop strong root structures.

Available Sizes: 5.5 x 5.5" & 11.5 x 11.5"

## Mighty Wash

**GUESSES  
WHO'S  
BACK**



Fast acting protection for your plants. Can be used on indoor and outdoor plants.

**NPK**  
INDUSTRIES





# Common Home Garden Pests & How To Combat Them



**Growing your own fruits, vegetables, and herbs is incredibly rewarding, whether you're tending a windowsill herb garden or a larger outdoor plot. But pests can quickly undo your hard work. Knowing the most common indoor and outdoor invaders—and how to deal with them—helps protect your harvest.**

## **Indoor Invaders**

Indoor gardens often attract pests like fungus gnats, spider mites, and whiteflies, which thrive in warm, humid conditions. Look for tiny black gnats around pots or webbing on leaves. Regularly inspect leaf undersides and use sticky traps to catch early infestations. Improve air circulation with a fan or by opening windows, and treat persistent pests with neem oil or insecticidal soap.

## **Outdoor Invaders**

Outdoor crops face a wider variety of pests, including aphids, caterpillars, slugs, and snails. Aphids cluster on new shoots, caterpillars chew holes in leaves, and slugs leave slime trails. Prevent trouble with companion planting (like marigolds or basil), good spacing, and removing weeds and dead foliage. Try handpicking caterpillars or using copper tape and diatomaceous earth to deter slugs—safe, chemical-free options.

## **Encouraging Beneficial Allies**

Invite beneficial predators such as ladybirds, lacewings, and predatory mites to help control pest populations. Outdoors, add a bug hotel or water feature to attract helpful insects. Indoors, only introduce predators in controlled environments like greenhouses where conditions are suitable.

## **Stay Vigilant**

The key to pest-free growing is daily monitoring. Check for signs of bugs, damage, or eggs. Early action prevents outbreaks. With good growing habits, natural treatments, and helpful insects, you can enjoy healthy, thriving plants indoors and out.





PLANT HEALTH

## Bugged Out Insect Screen



Prevent insects from contaminating your growing environment with Bugged Out insect ventilation screens.

Sizes Available: 102mm, 252mm & 315mm

PLANT HEALTH

## Lockdown Pads



Lockdown Pads, a water resistant, yellow sticky pad that attracts a wide range of insects in your garden. Free of pesticides and having little impact on the environment.

Available Sizes: 6" round, 6" square & 12" round.

# LOCKDOWN PADS



# KEEP BUGS ON LOCKDOWN

A simple & reliable pesticide-free solution to help protect your plants from insects and bugs.



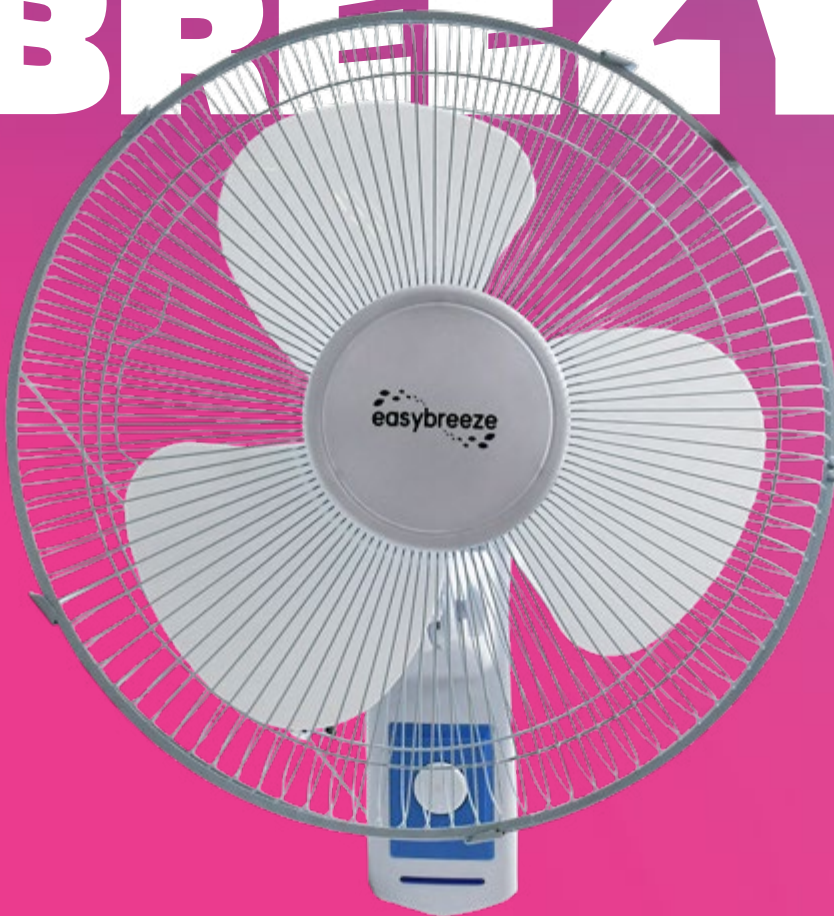


# Ventilation & Air Circulation

Easy Grow's ventilation products ensure optimal air circulation for healthy plant growth. Featuring fans, ducting, and filters, these solutions are ideal for maintaining ideal growing conditions in any garden setup.



# IT'S EASY STAYING BREEZY



**16 INCH DIAMETER**

**3 SPEED OPTIONS**

**90 DEGREES OSCILLATION**

**FIXTURES INCLUDED**



VENTILATION & AIR CIRCULATION

## Easy Breeze Wall Fan



Our EasyBreeze Oscillating wall fan is the best choice for medium to large growing environments. The 16 inch span of the fan provides any area with a great circulation of air.

16inch Diameter | Available in single packs or twin packs.

VENTILATION & AIR CIRCULATION

## Power Grip Fan



The Power Grip Oscillating Clip Fan can be clipped onto any horizontal or vertical pole. Featuring 180° adjustable tilt and 120° oscillation.

Available Size: 6inch Diameter





# Direct the Flow, Boost the Growth

Easy Grow's ducting range offers durable, high-quality solutions for optimal airflow management in gardening environments. Designed to withstand varying conditions, our ducting ensures efficient ventilation, temperature control, and enhanced plant growth, making it an essential component for indoor and greenhouse setups.

## › Combi+ Ducting

Combi+ Ducting offers durable, multi-layered construction for superior strength and flexibility. Ideal for both intake and exhaust, it ensures efficient air circulation and easy installation in any growing environment.

## › SoundTrap Ducting

Soundtrap Ducting provides efficient airflow with built-in noise reduction, ensuring a quieter growing environment. Its insulated design minimises sound while maintaining excellent ventilation, perfect for maintaining a peaceful space.



VENTILATION & AIR CIRCULATION

## Sound Trap Ducting



Eliminate Fan and Airflow noises in your ventilation system with our premium quality sound trap ducting.

Various lengths and diameters available for this product.

VENTILATION & AIR CIRCULATION

## Combi Flexible Ducting



Combi Flexible Duct is a combination of an aluminium/ polyester laminated inner-duct with a high tensile steel wire helix, covered with a mechanical resistant PVC layer.

Various lengths and diameters available for this product.

VENTILATION & AIR CIRCULATION

## Jubilee Clips



Jubilee Clips are a great way of attaching ducting to fans, filters and joints when you need a more secure fit. Each clip is easily adjustable for various sized ducting.

Available Sizes: 4", 5", 6", 8", 10" & 12" Diameter.

VENTILATION & AIR CIRCULATION

## Adjustvent Fan Control



With smooth adjustments to precisely set your fan speed, the AdjustVent gives you precise control, allowing you to increase ventilation when ambient temperatures increase.

UK Plug only.



# Growing Accessories

Easy Grow's growing accessories include stakes, ties, and pots, providing essential support for gardeners. These high-quality products ensure plants thrive, catering to the needs of both amateur and professional growers.





INTEGRA BOOST

## Integra Boost 2-Way Humidification 55%



Integra Boost is a two-way humidity control solution designed to maintain optimal moisture levels for various products, including herbs, spices, tobacco, and cigars.

Available Sizes: 4g, 8g & 67g

INTEGRA BOOST

## Integra Boost 2-Way Humidification 62%



Integra Boost is a two-way humidity control solution designed to maintain optimal moisture levels for various products, including herbs, spices, tobacco, and cigars.

Available Sizes: 1g, 2g, 4g, 8g, 67g & 420g



# THE SMARTEST HUMIDITY CONTROL SOLUTIONS.

## PRESERVE FLAVOUR & FRESHNESS WITH BOOST®



SCAN ME  
FOR MORE  
INFO





# INTEGRA BOOST® TERPENE ESSENTIALS

These packs have a dual-purpose: to incorporate flavor/sensory enhancing botanical terpenes into your consumable products and to regulate humidity.

BOOST TERPNE ESSENTIALS

## Pinene 62%



Flavour: Earthy, with notes of Pine & Spice.

BOOST TERPNE ESSENTIALS

## Myrcene 62%



Flavours: Earthy base, with musky, spicy notes.

BOOST TERPNE ESSENTIALS

## Terpinolene 62%



Flavour: Light citrus and sweet pine.

BOOST TERPNE ESSENTIALS

## Humulene 62%



Flavour: Rich earthy base, with notes of pungent hops.

BOOST TERPNE ESSENTIALS

## Limonene 62%



Flavour: Fresh squeezed lemon juice.

BOOST TERPNE ESSENTIALS

## B Caryophyllene 62%



Flavour: Complex earthy base, with notes of spice.

BOOST TERPNE ESSENTIALS

## Linalool 62%



Flavour: Floral notes, with a cooling mouthfeel.

**Ln**  
Linalool

**Mc**  
Myrcene

**Bc**  
Beta-Caryophyllene

**Lm**  
Limonene

**Te**  
Terpinolene

**Hu**  
Humulene

**Pi**  
Pinene





## FREQUENTLY ASKED QUESTIONS

### Boost® Terpene Essentials

#### What are Terpenes?

Terpenes are natural compounds that give plants their distinctive aromas and flavors.

#### How does it work?

Each pack contains our patented, plant-based, 2-way humidity control formula and a terpene isolate. The pack senses the humidity inside any sealed container and automatically adds or absorbs moisture to maintain an ideal relative humidity (RH) level. As the contents within the container absorb and let out moisture, it will simultaneously infuse with the terpene's specific aroma, flavor, and potential effects.

#### How do I use Boost Terpene Essentials?

Remove the pack from the clear outer wrapper. Then, place your consumable product and the Integra Boost Terpene Essentials pack in an airtight container and seal. The initial terpene infusion occurs over 24-72 hours.

After infusing your consumable product for up to 72 hours, replace with a classic Boost® pack in 55 RH or 62 RH to preserve the infused flavor and freshness long-term.

After infusion, make sure to store your Boost® Terpene Essentials pack in a sealed container or its original pouch for reuse up to 3 times.

#### Which size pack do I need?

We currently offer Boost® Terpene Essentials in 4g and 67g sizes.

4g pack works with up to a half ounce of flower (.5oz = 14g)

67g pack works with up to one pound of flower (1lb = 453g)

#### Can I reuse a pack?

Boost® Terpene Essentials can be reused up to 3 times if stored in an airtight container between infusions. Just like our classic Boost® packs, they will work longer and more effectively when not exposed to the outside environment. After infusing your product for 24-72, replace with a classic Boost® pack in 55 RH or 62 RH to preserve the infused flavor and freshness long-term.

#### Do Boost Terpene Essentials also regulate humidity?

Yes! Our Terpene Essentials packs contain the same 2-way humidity control technology as our classic Boost® packs. Along with terpene infusion, this product will preserve freshness, flavor, and potency by maintaining the proper moisture levels. Additionally, our salt-free, non-toxic, and plant-based formula DOES NOT add any unwanted flavors or chemicals.







SCAN ME  
FOR MORE  
INFO

NOW AVAILABLE AT EASY GROW

# NEU<sup>TM</sup> BAG

# ELEVATE YOUR AROMA GAME.



**WORKS IN  
48 HOURS  
WORKS FAST**

**100%  
NATURAL  
INGREDIENTS**

NEU Bag infusion packs increase terpene content in cured material without any equipment. When a NEU bag is introduced into an environment with cured material, the oil will move from the higher terpene concentration bag into the lower terpene concentration cured material until an equilibrium is reached.



# TERPENE INFUSION BAGS FOR ENRICHING FLOWER.

NEU BAGS

## Candy Gas



The Candy Gas flavours and aromas are similar to the Gelato, Permanent Marker, Runtz, and Zoap strains.

Available Sizes: 5g Per Bag

NEU BAGS

## Dessert



The Dessert flavours and aromas are similar to the Wedding Cake, Sherbert, and Lemon Cherry Gelato strains.

Available Sizes: 5g Per Bag

NEU BAGS

## Gas



The Gas flavours and aromas are similar to the OG Kush, SFV OG Kush, Larry OG, Tahoe OG, and Nameless OG strains.

Available Sizes: 5g Per Bag

NEU BAGS

## Purple



The Purple flavours and aromas are similar to the Granddaddy Purple and Purple Urkle strains.

Available Sizes: 5g Per Bag

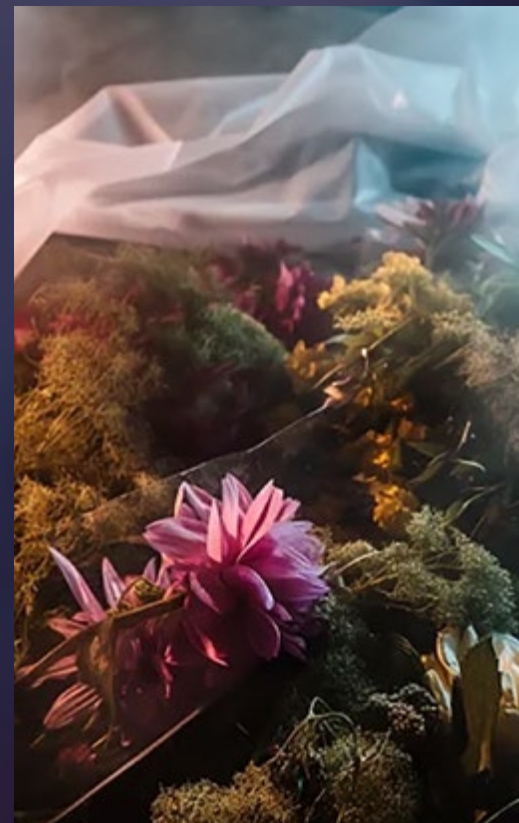
NEU BAGS

## Sour



The Sour flavours and aromas are similar to the Sour Diesel, Super Sour Diesel, and NYC Diesel strains.

Available Sizes: 5g Per Bag





GROWING ACCESSORIES

# Plant Strapper

The Plant Strapper – the quick and easy solution for securing stems to stakes, trellises, or other supports. Ideal for use in greenhouses, grow-rooms, or gardens, this versatile tool provides gentle but firm support without damaging your plants.



GROWING ACCESSORIES

## Plant Strapper

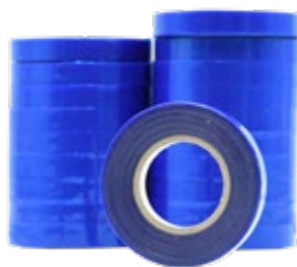


Save time and effort in your outdoor or indoor garden with the Easy Grow Plant Strapper. Secure your plant stems and branches to supports, stakes & plant poles.

Comes with Staples & Ribbon (also sold separately)

GROWING ACCESSORIES

## Plant Strapper Ribbon



Our Plant Strapper ribbon is extremely durable, hard to tear and perfect for tying together your plants together quickly, easily, and effectively.

Compatible with the Easy Grow Plant Strapper

GROWING ACCESSORIES

## Plant Strapper Staple



Strong metal staples for the Easy Grow Plant Strapper. Comes in boxes of 10,000.

Compatible with the Easy Grow Plant Strapper





## GROWING ACCESSORIES

### Fabric Pots



Roots grown in an Easy Grow fabric pot do not wrap around the outside of the container. In an Easy Grow fabric pot the roots air prune; forming multi branched networks of roots & root hairs making strong and efficient root systems.

Available Sizes: 7.6Ltr & 76Ltr

## GROWING ACCESSORIES

### Plant Poles

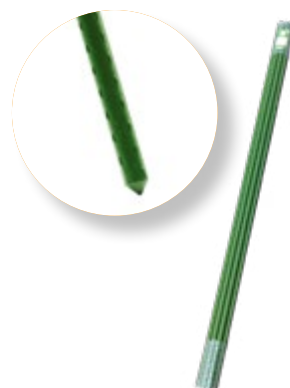


Strong and durable Plant Poles to provide your flowering plants with the necessary support to protect even the heaviest branches.

Available Sizes: 3ft / 4ft / 5ft - Packs of 10

## GROWING ACCESSORIES

### Ridged Plant Poles



Extra strong 11mm or 16mm thick Ridged Plant Poles provide your flowering plants with the necessary support to protect even the heaviest branches.

Available Sizes (Packs of 10):  
16mm - 4ft  
11mm - 4ft / 5ft / 6ft

## GROWING ACCESSORIES

### Trellis Netting



Protect and support your plants with the Easy Grow Trellis Netting. An extremely durable solution giving your plants the protection they need even in small spaces.

Available Size: 2mtr x 10mtr

## GROWING ACCESSORIES

### Plant Supports



Strong and durable Plant Supports with a conical design to provide your flowering plants with the necessary support to protect even the heaviest branches.

Multiple diameters & lengths available.

## GROWING ACCESSORIES

### Herb Dryer



Herb Dryer brings a simplicity to the herb drying process along with rapidly speeding up the process. It is a multi-rack dryer with internal carbon filtration system with motor driven fan for drying herbs. Available in regular and XL sizes.

Replacement filters available in both Regular & XL



#### GROWING ACCESSORIES

### Protective Coveralls



Breathable fabric, constructed from 100% Polypropylene. Has front fastening zip plus elasticated hood, cuffs and ankles.

Available Size: M / L / XL

#### GROWING ACCESSORIES

### VAPR Mini Fogger



The MiniFogger boasts a sleek and compact wireless design, making it effortlessly portable. With 2 modes of spray, giving you the versatility to tackle more tasks either with more precision, or with more coverage.

Available Sizes: One Size

#### GROWING ACCESSORIES

### Rope Ratchets



Rope Ratchet light fixture hangers allow the easy hanging of your growing environment equipment. Rope Ratchets pull tight, lock in place to avoid break or slip.

Available Sizes: Lightweight (5kgs) / Heavyweight (68kgs) / Jumbo (68kgs)

#### GROWING ACCESSORIES

### Tent Ratchet



Large hook rope ratchets, 2 per pack. Designed to be compatible with grow tent frames. Can hold up to 34kg per ratchet.

Available Size: One Size - Two Ratchets per Pack (34kgs)

**VERSATILE,  
COMPACT &  
CONVENIENT.**



**VAPR**  
LIQUID NANO SPRAYER



GROWING ACCESSORIES

## Liquid Absorbent Roll



Our nutrient and liquid absorbent rolls are perfect for using on spills and leaks of liquids and nutrients. Providing minimal mess and waste.

Available Size: 50cm x 40mtr

GROWING ACCESSORIES

## Steel Gardening Wire



Heavy duty wire, ideal for general gardening use including tying, fixing, training and supporting. 50m Length. Available in uncoated or PVC coated.

Uncoated - 50m x 1.4mm /  
PVC Coated - 50m x 1.8mm

GROWING ACCESSORIES

## Flat Gardening Wire



Easy Grow gardening wire is for undergirding climbing plants, tree branches, bushes, flowers' stems or vegetables. Spool enables the unwinding, a wire cutter is attached.

Available Size: 50mtr x 2mm

GROWING ACCESSORIES

## Temp & Humidity Meter



The temperature and humidity meter is easy and convenient to operate with a large multi-function LCD Screen.

Power: Batteries included

GROWING ACCESSORIES

## Easy Snip Scissors



Easy Snips are a premium grade plant trimming scissor, designed to allow you to trim your plant with ease. Make a difference to the speed and ease of pruning your plants.

Available in Straight or Curved versions

GROWING ACCESSORIES

## Universal Grow Net



Our Universal Grow Nets provide essential support for plants as they grow, promoting better air circulation, light exposure, and overall plant structure.

Size: from 60cm x 60cm to 1.2m x 1.2m (elasticated)





# Retail & Packaging

Easy Grow's retail and packaging product range offers durable, eco-friendly solutions designed for convenience and sustainability. These high-quality products meet the needs of modern gardeners and retailers, ensuring efficient and environmentally conscious packaging.



RETAIL & PACKAGING

## Cushelle Toilet Rolls



Cushelle toilet rolls are soft and gentle on your skin and highly absorbent. With micro air pockets making each sheet incredibly soft. Now with 50% more sheets!

One Size: Pack of 36 Rolls

RETAIL & PACKAGING

## Gripseal Bags



A great packaging solution for securing and organizing your essentials with ease. Providing a secure and resealable option for a wide range of applications.

Multiple Sizes available.

RETAIL & PACKAGING

## Sanitising Bucket Wipes



On-the-go cleanliness and hygiene. These wipes are specially formulated to provide a quick and effective way to sanitise surfaces, ensuring a germ-free environment.

Available Sizes: 1000 Wipes - 8" x 8"

RETAIL & PACKAGING

## De-Ionised Water



The essential solution for a multitude of applications. Specially treated to remove ions and impurities, our deionised water guarantees unparalleled purity, making it the ideal choice for various industries and purposes.

Available Size: 25L

RETAIL & PACKAGING

## Tape Dispenser



The perfect companion for your packaging and organisational needs. This thoughtfully designed product is engineered to streamline your tape application process, providing efficiency and convenience in every use.

Fits 50mm Tapes

RETAIL & PACKAGING

## Polyprop Tapes



Engineered with precision and durability in mind, our Polypropylene Tape is designed to secure your packages with maximum strength and reliability.

Available in various colours and sizes



RETAIL & PACKAGING

## Vinyl Gloves



Crafted from top-tier Polyvinyl Chloride, our Powder-Free Vinyl Gloves stand as a straightforward and efficient hand protection solution.

Available Types: S, M, L & XL

RETAIL & PACKAGING

## Nitrile Gloves



Our Nitrile Gloves are the ultimate choice for those seeking premium hand protection. Engineered for strength and durability, these gloves offer a reliable shield for various applications.

Available Sizes: M, L & XL

RETAIL & PACKAGING

## Household Gloves



Designed for comfort and durability, these gloves offer a protective barrier for your hands, ensuring a hygienic and safe cleaning experience.

Available Sizes: S, M, L & XL



# SUSTAINABLE PACKAGING SOLUTIONS...

Looking for a packing supplier?  
Our sister company Mariner  
Packaging offers a huge range  
of sustainable quality packaging  
solutions.

Get in touch for more information.  
[www.marinerpackaging.co.uk](http://www.marinerpackaging.co.uk)





RETAIL & PACKAGING

## Blue Centre Feed Roll



Clear up spillages with ease with this highly absorbent blue tissue sheeting that can absorb liquids and clean surfaces without disintegrating.

Comes in packs of 6 rolls.

RETAIL & PACKAGING

## Hand Sanitiser



Aloe Vera scented Hand Sanitiser. Kills 99% of all bacteria present helping keep your hands clean in the work place.

Available Sizes: 500ml

RETAIL & PACKAGING

## Cable Ties



Cable Ties offer a durable and versatile solution for securing and organising plants, cables, and equipment in any growing environment.

Available Sizes: One Size

RETAIL & PACKAGING

## Versan Disinfectant



Versan broad spectrum surface disinfectant for disease control, bactericidal, fungicidal, viricidal & sporicidal. Kills 99.99% of bacteria.

Available Sizes: 5Ltr

RETAIL & PACKAGING

## Ultra Ax Disinfectant



Ready to use viricidal / bactericidal disinfectant spray, effective against all virus and bacterial infections. Safe to use on all touch surfaces that are washable.

Available Sizes: 750ml

RETAIL & PACKAGING

## Paper Void Fill Dispenser



Paper box dispensers allow you to use 100% natural recycled paper. The recycled paper can be pulled out of the innovative and practical box very easily and quickly.

Available Sizes: 375mm x 250mm - 80gsm



RETAIL & PACKAGING

## Durable & Reliable.

Made from strong, tear-resistant material, they're ideal for disposing of used media, plant waste, and general rubbish. Designed to handle heavy loads with ease, these sacks are an essential for keeping workspaces clean and tidy.

RETAIL & PACKAGING

### Carrier Bags



Our Premium Carrier Bags are the perfect blend of style and functionality, designed to enhance your brand image and provide a convenient and eco-friendly packaging solution.

Available in various colours & sizes

RETAIL & PACKAGING

### Compactor Refuse Sacks



Designed for strength and reliability, these sacks offer a sanitary and hassle-free way to manage and dispose of waste.

Various sizes available.

RETAIL & PACKAGING

### Black Refuse Sacks



Designed for strength and reliability, these sacks offer a sanitary and hassle-free way to manage and dispose of waste.

Available Sizes:  
Refuse Sacks Black HD (300 Per Box), HD Refuse Sack Black Ostrich (100 Per Box).

RETAIL & PACKAGING

### Pallet Wrap



High tac black opaque pallet wrap. Ideal for wrapping a range of parcels & products. Black opaque for security & privacy. UK Manufactured.

Available Sizes:  
500mm x 200m x 25mu Flush Core / 400mm x 200m x 20mu Extended Core.



RETAIL & PACKAGING

# Securing Packages With Confidence

Designed for retail and packaging use, it delivers a strong, reliable seal on boxes, parcels, and product wraps. Its easy-roll design ensures smooth application, saving time and effort while keeping your shipments secure.



Various Colours & Sizes Available

RETAIL & PACKAGING

## Hand Tape



Hand tape with a high grade adhesive ideal for all manner of packing requirements. Available in Clear or Brown.

Various colours and sizes available.

RETAIL & PACKAGING

## Security Sealed Tape



Printed "Contents Checked and Security Sealed" tape. Ideal packing tape for sending out parcels securely.

Available Size: 50mm x 66mtr

RETAIL & PACKAGING

## Fragile Packing Tape



Printed "FRAGILE" tape. Ideal packing tape for sending out parcels that contain fragile or delicate items.

Available Size: 50mm x 66mtr





A large greenhouse with a glass roof and metal frame. Inside, there are many rows of plants growing in white vertical planters. The plants are green and leafy. The background is a solid green color.

# Additional Information

Need more details? For full product specifications, safety data sheets or product support, please contact our customer service team. We're happy to assist with tailored advice, stockist enquiries, or custom solutions to suit you or your stores needs.

Visit [www.easy-grow.co.uk](http://www.easy-grow.co.uk) or email [info@easy-grow.co.uk](mailto:info@easy-grow.co.uk) for more information.





## Get in Touch

At Easy Grow, we're here to help – whether you're a trade customer with a stock enquiry or an end user looking for product support. While we are a trade-only supplier, we're more than happy to assist end users with product advice, technical guidance, or help finding a local stockist.

### Trade Customers

For orders, pricing, availability, and account support, you can contact us directly using the details below.

**sales@easy-grow.co.uk**  
**0800 612 9099**  
**01472 346 900**

### End Users

Want to find your nearest Easy Grow stockist or need help with some technical support for our products? Drop us a message at [sales@easy-grow.co.uk](mailto:sales@easy-grow.co.uk) and we'll be glad to point you in the right direction.

You can also find more information on our website at [www.easy-grow.co.uk](http://www.easy-grow.co.uk) or follow us on social media for updates, tips, and product news.

## Opening Times

Our team at Easy Grow is here to support you throughout the week:

**Monday to Thursday: 08:30 – 16:30**  
**Friday: 08:30 – 16:00**

Please note, we are closed on all UK bank holidays. Any updates to our opening hours – including seasonal closures or special announcements – will be shared on our official social media channels, so be sure to follow us for the latest information.

## Brand Information

Easy Grow deal with only the best suppliers on the market, here are links to their websites for further information relating to their brand and products.

**Athena Nutrients**  
[www.athenaag.com](http://www.athenaag.com)

**Green Planet Nutrients**  
[www.greenplanetnutrients.com](http://www.greenplanetnutrients.com)

**Remo Nutrients**  
[www.remonutrients.com](http://www.remonutrients.com)

**RAW Soluble**  
[www.npk-industries.com](http://www.npk-industries.com)

**BioNova**  
[www.bionovanutrients.com](http://www.bionovanutrients.com)

**Exhale**  
[www.exhaleco2bags.com](http://www.exhaleco2bags.com)

**Hygrozyme**  
[www.hygrozyme.com](http://www.hygrozyme.com)

**Plug Life**  
[www.plug-life.co.uk](http://www.plug-life.co.uk)

**BioTabs**  
[www.biotabs.nl](http://www.biotabs.nl)

**ONA Odour Neutraliser**  
[www.onaonline.com](http://www.onaonline.com)

**Lightite Horticultural Sheeting**  
[www.lightite.co.uk](http://www.lightite.co.uk)

**Integra Boost**  
[www.integra-products.com](http://www.integra-products.com)

**Neu Bags**  
[www.neubag.com](http://www.neubag.com)

**Faven Lighting**  
[www.favenlighting.com](http://www.favenlighting.com)

**Lumatek Lighting**  
[www.lumatek-lighting.com](http://www.lumatek-lighting.com)

FAVEN

## Find a Retailer Near You!

Looking to get your hands on Easy Grow products? Our range is available through a trusted network of retailers across the UK and Europe. Whether you're after propagation plugs, odour neutralisers, foils and sheeting, or anything in between – we've made it easy to find what you need.

Visit our Store Locator to quickly discover the online stores or your nearest retailers that stock your chosen Easy Grow products. Start your search today at: [www.easy-grow.co.uk/store-locator](http://www.easy-grow.co.uk/store-locator)





# **POWERING GROWTH SINCE 2003**



**EASYGROW<sup>®</sup>**  
HORTICULTURAL WHOLESALE | EST. 2003

[sales@easy-grow.co.uk](mailto:sales@easy-grow.co.uk) | +44 (0) 1472 346 900 | 0800 612 9099 | [www.easy-grow.co.uk](http://www.easy-grow.co.uk)